

bwana ndiye mchungaji wangu

MUSIC: MWESSWA MATENDA DIEUDONNÉ

♩ = 100
Andantino

The image displays a musical score for the song "bwana ndiye mchungaji wangu". It consists of four staves of music, each with a treble or bass clef and a 3/4 time signature. The key signature is one flat (Bb). The tempo is marked as "Andantino" with a quarter note equal to 100 beats per minute. The lyrics are written below each staff, corresponding to the notes. The lyrics are: "bwa- na ndi- e mu- chu- nga- ji wa- ngu u u".

bwa- na ndi- e mu- chu- nga- ji wa- ngu u u

bwa- na ndi- e mu- chu- nga- ji wa- ngu u u

bwa- na ndi- e mu- chu- nga- ji wa- ngu u u

bwa- na ndi- e mu- chu- nga- ji wa- ngu u u

u u u a- na ni li- nda ko- te

u u u a- na ni li- nda ko- te

u u u a- na ni li- nda ko- te

u u u a- na ni li- nda ko- te

The image shows a musical score for four voices, arranged in four staves. The music is in B-flat major (two flats) and 4/4 time. The lyrics are: "e e e si- pu- ngu- ki- wi na ki- tu".

The first three staves are in treble clef, and the fourth staff is in bass clef. The melody is simple and repetitive, with a focus on the vowel 'e' in the first measure of each line. The lyrics are written below the notes, with hyphens indicating syllables that span across notes.

Staff 1 (Treble Clef):
e e e si- pu- ngu- ki- wi na ki- tu

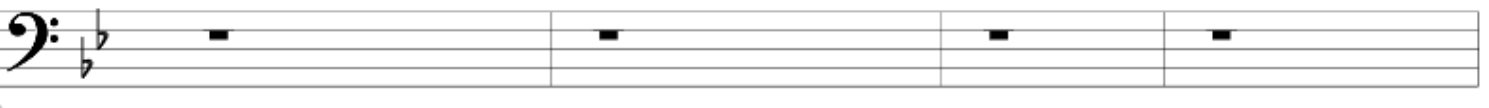
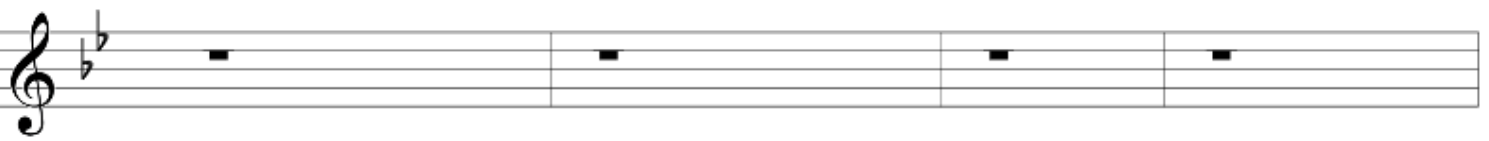
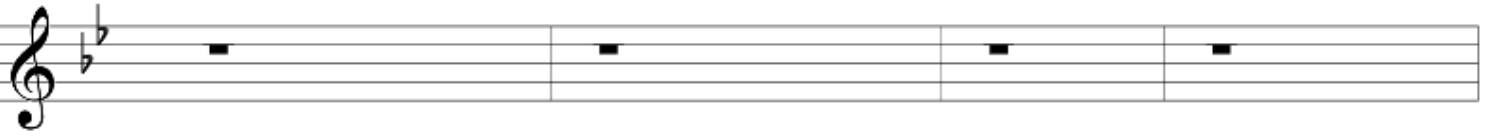
Staff 2 (Treble Clef):
e e e si- pu- ngu- ki- wi na ki- tu

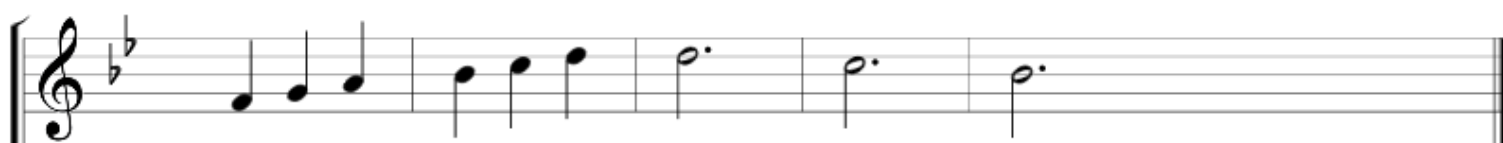
Staff 3 (Treble Clef):
e e e si- pu- ngu- ki- wi na ki- tu

Staff 4 (Bass Clef):
e e e si- pu- ngu- ki- wi na ki- tu

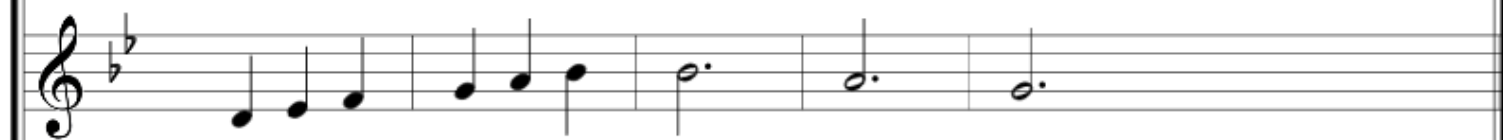


1-a- ni o- ngo- za ka- ti- ka nji- a sa- wa
2-ni- na- po pi- ta kwe- nye bo- nde la gi- za
3-ma- ba- ya yo- te kwe- li si- ya o- go- pi
4-u- na ya ta- ndi- ka me- za mbe- le ya- ngu

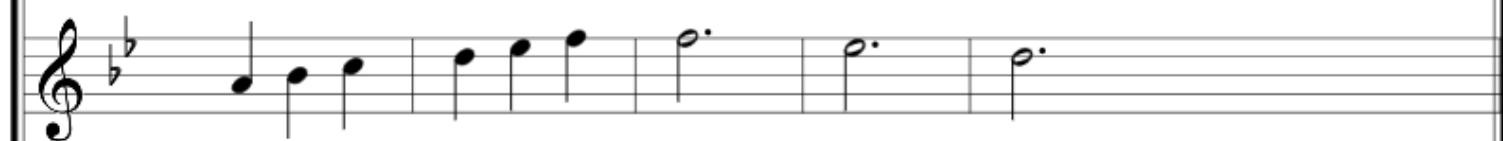




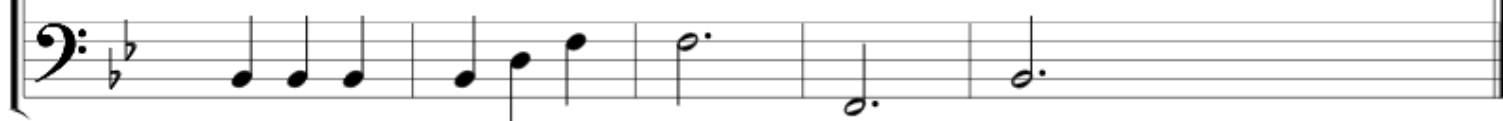
1-kwa a- ji- li ya ji- na la- ke
2-Mu- ngu wa- ngu a- na ni li- nda
3-kwa- ni we- we u- ko- na mi- mi
4-ma-cho- ni pa a- du- wi za- ngu



1-kwa a- ji- li ya ji- na la- ke
2-Mu- ngu wa- ngu a- na ni li- nda
3-kwa- ni we- we u- ko- na mi- mi
4-ma-cho- ni pa a- du- wi za- ngu



1-kwa a- ji- li ya ji- na la- ke
2-Mu- ngu wa- ngu a- na ni li- nda
3-kwa- ni we- we u- ko- na mi- mi
4-ma-cho- ni pa a- du- wi za- ngu



1-kwa a- ji- li ya ji- na la- ke
2-Mu- ngu wa- ngu a- na ni li- nda