

# NI YESU TU!

Na: *Guzuye, R.A*  
(0755 909 067)

Soprano

Bass

Ha ku na ji na ji ngi ne tu li lo pe wa si si za i di ya ji na- Ye su Ha ku na

Detailed description: This system shows the first five measures of the song. The Soprano part is written in a treble clef with a key signature of one sharp (F#) and a 3/8 time signature. The Bass part is written in a bass clef with the same key signature and time signature. The lyrics are: 'Ha ku na ji na ji ngi ne tu li lo pe wa si si za i di ya ji na- Ye su Ha ku na'. There are '7' symbols above the lyrics in the first four measures, likely indicating a specific rhythmic pattern.

S.

B.

Ha ku na Ha ku na ji na ji ngi ne tu li lo pe wa wa na da

Detailed description: This system shows the next four measures. The Soprano part continues with the lyrics: 'Ha ku na Ha ku na ji na ji ngi ne tu li lo pe wa wa na da'. The Bass part provides accompaniment with chords and moving lines.

S.

B.

mu za i di ya ji na Ye su Ji na Ye su ni u zi ma ji na Ye su

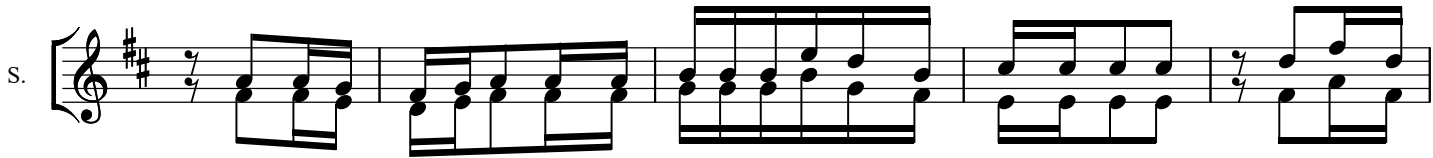
Detailed description: This system shows the next six measures, including a double bar line. The Soprano part has the lyrics: 'mu za i di ya ji na Ye su Ji na Ye su ni u zi ma ji na Ye su'. The Bass part continues with accompaniment.

S.

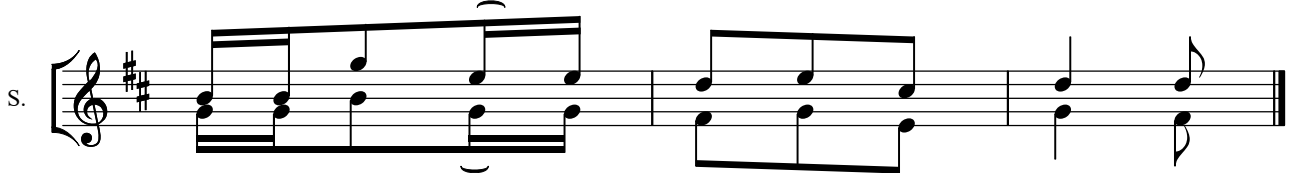
B.

ni u ha i ji na Ye su li na tu pa tu ma i ni la mi le le.

Detailed description: This system shows the final five measures of the song. The Soprano part concludes with the lyrics: 'ni u ha i ji na Ye su li na tu pa tu ma i ni la mi le le.'. The Bass part provides accompaniment and ends with a final cadence.



1. Vi po fu wa li fa nywa ku o na wa li po nywa na ye Ye su vi po fu  
2. Wa ko ma wa li ta ka swa wa li ta ka swa na Bwa na Ye su wa ko ma  
3. Wa fu wa li fu fu li wa wa li fu fu li wa na na Ye su wa fu wa  
4. Tu m ki mbi li e Ye su a ta tu sa me - he dha mbi ze tu, tu mki mbi



wa li po nywa - na Bwa na Ye su.  
wa li po nywa na Bwa na Ye su.  
li fu fu liwa na Bwa na Ye su.  
li e Ye su a ta tu po nya.