

TUMPE SIFA

DALMATIUS P.G.F

$\text{♩} = 75$

Musical notation for the first line of the song, bass clef, 6/16 time signature, key of D major.

Ka ti ka ma hanga i ko ye tu tu na yo pi ta ye ye

Musical notation for the second line of the song, bass clef, 6/16 time signature, key of D major.

a na tu o na naku tu sa i di a tu na po ku ta na na ma gu mu na

Musical notation for the third line of the song, bass clef, 6/16 time signature, key of D major.

ku ka ta ta ma a ye - ye a na tu si ki a ki la tu mu o mba po te na

Musical notation for the fourth line of the song, treble and bass clefs, 6/16 time signature, key of D major.

Njo

o ni tu m pe
o ni tu m tu

a na tu pa ngu vu i li tu so nge mbe le

Musical notation for the fifth line of the song, treble and bass clefs, 6/16 time signature, key of D major.

si fa Mu ngumwenye u we za
ku ze Mu ngu mu u mba we tu

tu mu i mbi
tu m shu ku

Mu ngu mwe nye u we za kwa pa mo ja
mu u mba we tu

1. 2.

e na nyi mbo za ku m tu ku za Njo a tu ja li a yo Kwa -
 ru kwa me ma

me ma a tu ja li a - yo

ni a na tu pe nda a na tu pi ga ni a a na tu shi ndi a
 te na

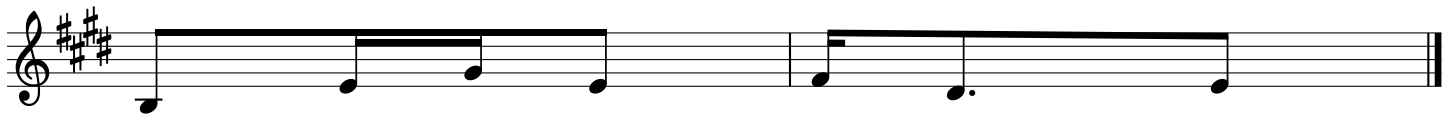
na te na

yo te tu si yo we za tu m tu ku ze

njo ni

Ka ti ka ta a bu ze tu ndi ye ki mbi li o m sa
 Njo ni tu mwimbi e si fa Bwa na Mu ngu we tu njo ni
 kwa fi li mbi na ka ya mba tu mwimbi e Bwa na kwavi

a da we tu wa ka ti wa ma te so ye ye ndi ye ki mbi li
 tu m si fu Mu ngu mu u mbawe tu tu mwi mbi e nyi mbo nzu
 ge le ge le nde re mo na vi fi jo njo ni tu mwi mbi e si



o ma i sha ni mwe tu
ri njo ni tum tu ku ze
fa mu u mba ji we tu