

NAMI NITAKAA NYUMBANI MWA BWANA

Katikati Dom. 28 mwaka A

Augustine Rutta

Mbezi Louis-2014

ni ta ka a nyu

Na mi mi ni ta ka a nyu mba ni mwa Bwa na na mi mi ni ta ka a nyu mba ni mwa

mi mi ni ta na mi ni ta ka a nyu mba ni mwa

This system contains the first six measures of the piece. It features a piano accompaniment with a treble and bass clef. The melody is written in the treble clef. The lyrics are: "Na mi mi ni ta ka a nyu mba ni mwa Bwa na na mi mi ni ta ka a nyu mba ni mwa". There are two lines of lyrics, with the second line starting from the second measure.

8 Bwa na mi le le. Na le le

This system contains measures 7-8. It features a piano accompaniment with a treble and bass clef. The melody is written in the treble clef. The lyrics are: "Bwa na mi le le. Na le le". There are two first endings, labeled 1 and 2.

12

This system contains measures 9-12. It features a piano accompaniment with a treble and bass clef. The melody is written in the treble clef.

1. Bwa na ndi ye m chu nga ji wa ngu si ta pu ngi ki wa na ki ttu, ka ti ka ma

18

This system contains measures 13-18. It features a piano accompaniment with a treble and bass clef. The melody is written in the treble clef.

li sho - ya ma ja ni ma bi chi - hu ni la za, ka ndo ya ma ji ya u tu li vu hu ni o ngo

27

This system contains measures 19-27. It features a piano accompaniment with a treble and bass clef. The melody is written in the treble clef.

za, hu ni hu i - sha - na fsi ya ngu

32



2. Hu ni o ngo za ka ti ka nji a za ha ki kwa a ji li ya ji na la ke, naam ni ja po pi ta ka

39



ti___ya - bo nde e la u vu li wa ma u ti si ta o go pa ma ba ya kwa ma a na

49



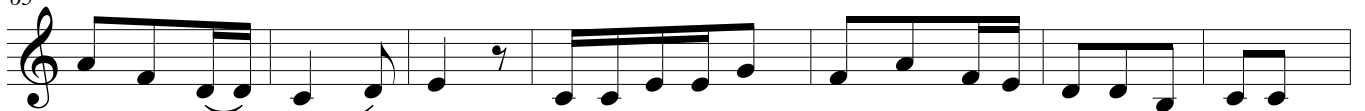
we we - u po pa mo ja - na mi na ki ko mbe cha ngu - ki na fu ri ka

57



3. wa a nda a me za mbe le ya ngu ma cho ni pa wa te si wa ngu u na ni pa ka ma fu ta

65



ki chwa ni___ pa - ngu go ngo la ko na fi mbo ya ko vya ni fa ri ji

72



4. Ha ki ka we ma na fa - dhi li zi ta ni fu a ta si ku zo te za ma i sha ya ngu ma

81



i sha ya ngu na mi ni ta ka a nyu mba ni mwa Bwa na mi___ le le