

AMEFUFUKA

D. R. KIDAHA

(The Hantinya).

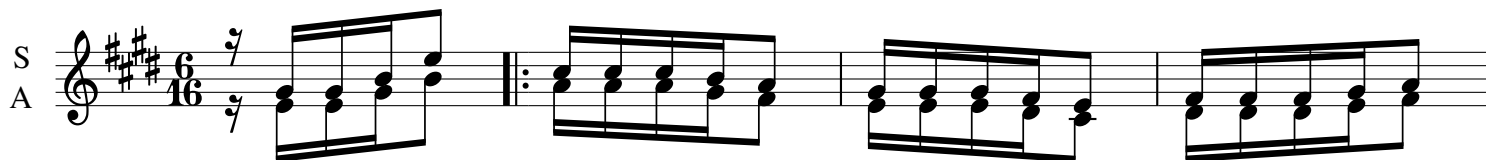
Kasulu-Kgm.

5/4/2019.

Kwa madaha na mwendo wa wastani.

$\text{♩} = 60$

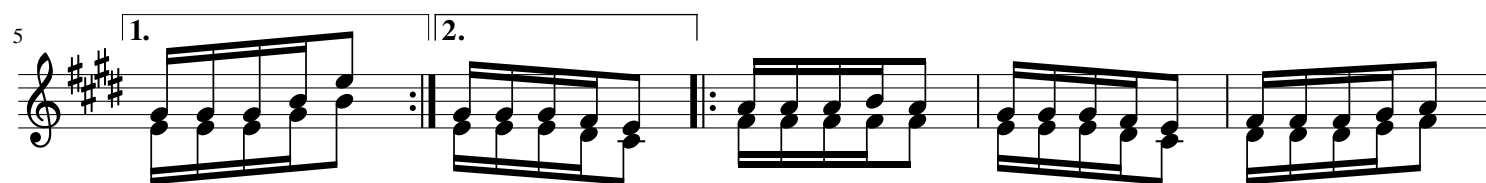
S
A



Mbo na wa tu wa na sha ngi li a na ku i mba nyi mbo za fu ra
Ze nye ta ba sa mu na ngu o ze nye ku me re me

5

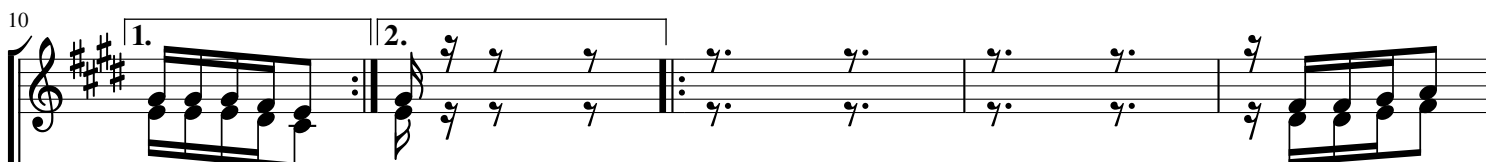
1. 2.



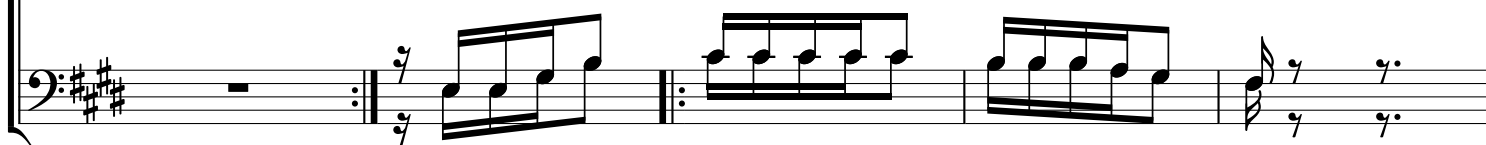
ha wa na nyu so ta Na u li za ku na ki tu ga ni na u li za ni ni ki me ji

10

1. 2.



li Na u li za li Mi mi m ge
kwe li si ju



Kwa ni we we Ki li cho to ke a ha pa m ji ni
ni m ge ni ha pa Ye ru sa le mu

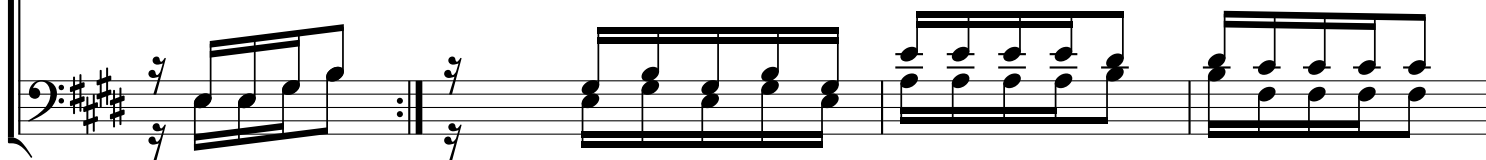
"CHORUS"

15

1. 2.



ni i Yu le Bwa na wa li ye mu u a - A me fu fu



Ha u ju i

19

ka

Ni kwe li kwe li A me fu fu ka A me fu fu ka A me fu fu

ka

Ni kwe li kwe li

Kwe li

24

ka Kwe li a me fu fu ka kwe li a me fu fu

A me fu fu ka Kwe li a me fu fu ka Bwa

A me fu fu ka a li vyo se ma ni kwe li kwe li A

A me fu fu ka A me fu fu ka

28

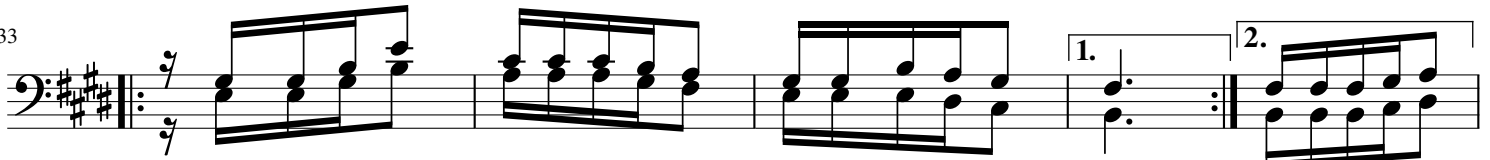
ka Kwe li

na A me fu fu ka A me fu fu

me shi nda ki fo na ma u ti Njo ni tu sha ngi li e e.

A me fu fu ka

33



1.(a)Ha ta pa zi a la he ka lu ni li me pa su ka, ni ku a shi ri
 (b)Li me pa su ka ku to ka ju u mpa - ka chi
 2.(a)Na wa li nzi wa li te te me ka kwa ho fu ku bwa,
 (b)U je me da ri na u ka ka ma vu u ka ko Ma, ku a shi ri
 3.(a)Na o mi tu me wa li ji fi cha ka ti ka nyu mba,
 (b)La ki ni Mu ngu a ka wa le te a Ma la i ka, ku a shi ri

38



a Yu le Bwa na wa li ye mu u a
 a Yu le Bwa na wa li ye mu u a
 a Yu le Bwa na wa li ye mu u a

4.(a) Mariamu na Magdalena walipofika,

(b) walikuta lile jiwe kubwa limesogezwa kuashiria Yule Bwana walie muua

5.(a) Simoni naye hakuamini kilicho semwa,

(b) Akakimbia na kukuta kaburi li wazi kuashiria Yule Bwana walie muua

NB; BAADA YA BETI IMBA "CHORUS"

Muwe na pasaka njema

0765812333