

# BWANA KAMA WEWE UNGEHESABU II

Wimbo wa katikati Dom ya 5 ya Kwaresma mwaka 'A'

Mwanzo Dom ya 28

Zab. 130 (K) 3-4

Revocatus Malale

13.01.2023

Shinyanga

*Andante.*

S  
A




Bwana ka ma we we u\_nge he sa\_\_ bu ma o vu, Ee\_\_Bwa na na\_\_ ni

T  
B

7

1. 2.



a nge si ma ma? ma ma? La\_\_ ki ni kwa\_\_ ko ku\_\_ na m sa ma\_\_ ha

14

1. 2.



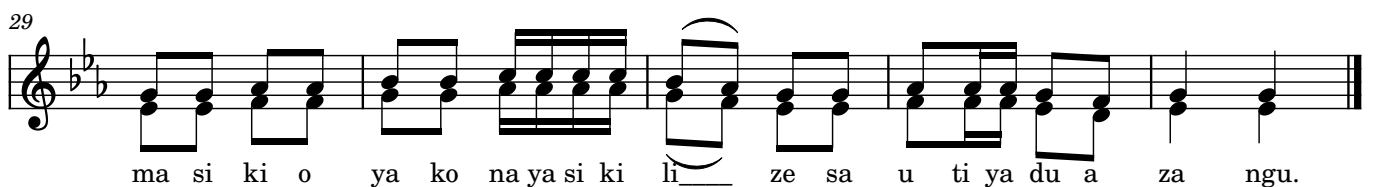
la ki ni kwa\_\_ ko ku\_\_ na m sa ma\_\_ ha Ee Mungu wa I sra e li. e li.

21



1. Ee\_\_Bwana to ka vi li ndi ni nimekuli li a, Bwana u i si ki e sa\_\_ u ti ya ngu;

29

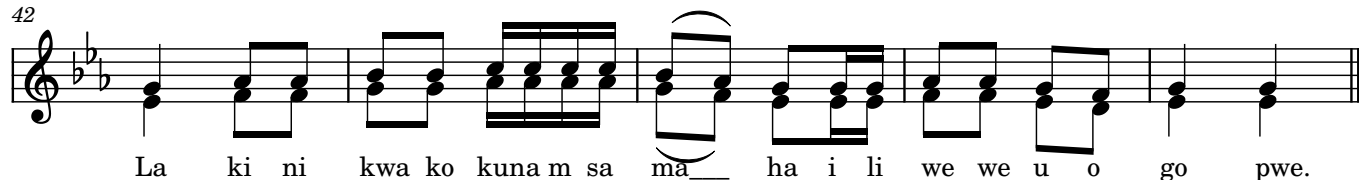


ma si ki o ya ko na ya si ki li\_\_ ze sa u ti ya du a za ngu.

34



42



47



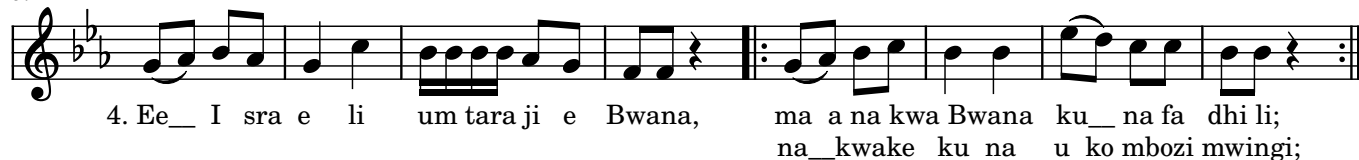
53



59



67



75

