

NALIFURAHI WALIPONIAMBIA

Na, Sospeter Mruma
NGULU - PARISH

Zab Sikukuu ya Kristo Mfalme

Moderato

mbi a twe nde

Na - li - fu - ra hi wa li po ni a mbi a na - twende nyu mba ni
twe nde

mbi a nyu mba ni

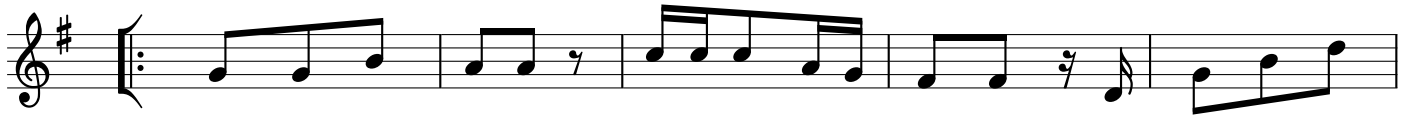
Detailed description: This is the first system of a musical score for the hymn 'NALIFURAHI WALIPONIAMBIA'. It consists of two staves: a treble clef staff and a bass clef staff. The key signature is one sharp (F#) and the time signature is 3/8. The melody is written in the treble staff, and the bass line is in the bass staff. The lyrics are written below the notes. The first staff has five measures, and the second staff has five measures. The lyrics are: 'Na - li - fu - ra hi wa li po ni a mbi a na - twende nyu mba ni twe nde' on the first line, and 'mbi a nyu mba ni' on the second line. There are some rests and phrasing marks in the music.

twe nde

nyu - mba ni twe nde nyu mba ni mwa Bwa na

twe nde

Detailed description: This is the second system of the musical score. It also consists of two staves: a treble clef staff and a bass clef staff. The key signature is one sharp (F#) and the time signature is 3/8. The melody continues in the treble staff, and the bass line continues in the bass staff. The lyrics are: 'twe nde nyu - mba ni twe nde nyu mba ni mwa Bwa na' on the first line, and 'twe nde' on the second line. The system ends with a double bar line and repeat dots.



- 1 . a) Na li fu ra hi wa li po ni a mbi a na twe nde nyu
 b) Mi gu u ye tu i - me si - ma ma nda ni ya ma
 2 . a) Ee Yeru sa le mu u - li ye - je ngwa ka mamji ulio shi
 b) Hu - ko ndi ko wa - li ko - pa nda ka bi la za
 3 . a) U - shu hu da kwa - ko I sra e li wa lishu ku ru
 b) Ma a na hu ko hu - ko vi li we kwa vi ti vya hu

mba ni nyu mba ni mwa - Bwa - na
 la ngo ya ko - Ee Ye ru sa le - mu
 kama na u li o shi ka ma - na
 Bwa na ka bi la za - Bwa - na
 jina la Bwana ji - na - la - Bwa - na
 ku mu vya E nzi vya nyu mba ya Da u di