

MSALABANI ULIKUFA

By Amos Mapunda (AM)

0744539454

BNK Choir

05/ 02 /2023 Lukarasi -MBINGA

Kwa Uchaji

M sa la ba ni Ye su u - li - fi a kwa

ba ni Ye su

Detailed description: This system contains the first four measures of the piece. The top staff is in treble clef with a key signature of one sharp (F#) and a 3/4 time signature. The bottom staff is in bass clef with the same key signature and time signature. The lyrics are written below the notes. The melody starts with a quarter note 'M', followed by eighth notes 'sa la', a quarter note 'ba', eighth notes 'ni Ye', a quarter note 'su', a half note 'u -', eighth notes 'li - fi', and a quarter note 'a kwa'. The bass line consists of eighth notes in the first two measures, followed by a quarter note 'ba', eighth notes 'ni', a quarter note 'Ye', and eighth notes 'su'.

a ji li ye tu kwa dha - mbi - ze - tu twa

kwa

Detailed description: This system contains the next four measures. The top staff continues the melody with a quarter note 'a', eighth notes 'ji li', a quarter note 'ye', eighth notes 'tu', a quarter note 'kwa', eighth notes 'dha - mbi -', a quarter note 'ze -', eighth notes 'tu twa'. The bass line continues with eighth notes 'a', eighth notes 'ji li', a quarter note 'ye', eighth notes 'tu', a quarter note 'kwa', eighth notes 'dha - mbi -', a quarter note 'ze -', and eighth notes 'tu twa'. There are repeat signs at the end of the second and fourth measures.

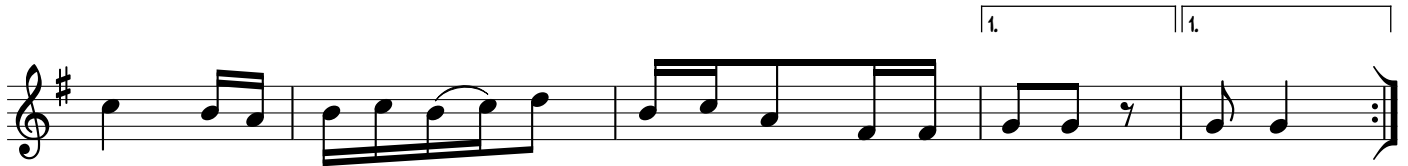
o mba wo ko vu ko vu

1. 2.

Detailed description: This system contains the final four measures. The top staff has a quarter note 'o', eighth notes 'mba wo', a quarter note 'ko', eighth notes 'vu', a quarter note 'ko', and eighth notes 'vu'. The bass line has eighth notes 'o', eighth notes 'mba wo', a quarter note 'ko', eighth notes 'vu', a quarter note 'ko', and eighth notes 'vu'. There are repeat signs at the end of the second and fourth measures, with first and second endings indicated by '1.' and '2.' above the staff.



- 1 . a) Kwa u po - le - wa ko Ye - su - wa ngu mwe ma u
 b) Mo yo wa ko u me ja a hu - ru ma na m sa ma ha
- 2 . a) Ngu vu za - ku le ge a pa le ju u msa la ba ni mi
 B) Ye su u - m - po le pa le ju u msa la ba ni njo
- 3 . a) Ye su u - tu sa me he ka - ti ka ma - o vu ya
 b) Ye su u tu o ndo le e ka - ti ka ma - o vu ya
- 4 . a) Dha mbi ze tu za ku po nza u tu hu ru mi e ka ti ka
 b) Twa ja mbe le ya ko Bwa na si ki li za sa la ze tu Ee



- li ku fa kwa a ji - li ya - dha mbi ze tu
 Yi su - wa ngu mwe - ma na o mba m sa _____ ma ha
- ba wa ku we - ke - a wa o na ma u mi vu mi vu
 o u tu o - ko - e ka - ti ka ma _____ te so
- le tu li yo ko se - a twa - o mba - to ba
 le tu li yo ko se - a twa - o mba _____ to ba
- ma o vu tu li yo ko se a twa o mba - to ba
 Ye su - wa ngu mwe - ma twa - o mba _____ to ba