

# UFURAHI MOYO WAO

Gaudence Kihwili  
Kigonsera -MBINGA

1. 2.

U fura hi mo yo wa o wa m ta fu ta o Bwa na u fu ra o

This system contains the first two measures of the piece. It features a treble and bass staff in G major (one sharp) and 3/8 time. The melody is written in the treble clef, and the accompaniment is in the bass clef. The lyrics are: "U fura hi mo yo wa o wa m ta fu ta o Bwa na u fu ra o". There are first and second endings indicated by the numbers 1 and 2 above the staff.

m ta ke ni Bwa na nangu vu za ke u ta fu te ni u so wa ke si

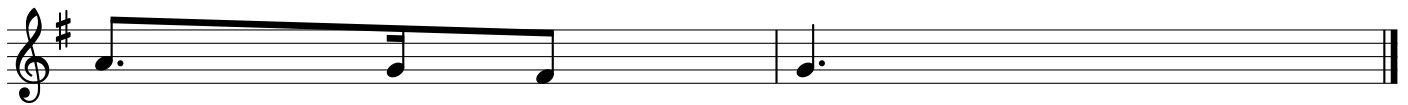
This system contains the next two measures. The melody continues in the treble clef, and the accompaniment remains in the bass clef. The lyrics are: "m ta ke ni Bwa na nangu vu za ke u ta fu te ni u so wa ke si".

ku zo te

This system contains the final two measures. The melody concludes in the treble clef, and the accompaniment concludes in the bass clef. The lyrics are: "ku zo te".



1 . Zi ku mbu ke ni a ja bu za ke zo te  
A li zo fa nya na mi u ji za ya ke na hu ku mu za ki nywaza  
2 . Ee nyi wa za - o - wa I bra hi mu m te u le wa ke m te  
Ee - nyi wa - na - wa - Ya ko bo



ki nywa cha ke  
u le wa ke