

WAUMINI TUNYANYUKE

By Paschal VK (PAVEKO)

0752863684-0621436716

Rev 26 / 03 / 2023

SONGEA

Kwafuraha

Musical notation for the first system of the song. It consists of a treble clef staff and a bass clef staff, both in 6/16 time and B-flat major. The treble staff contains the melody with lyrics: "Haya haya Wau mi ni tu - nyanyu ke tu si mame tu ka to e mato le o". The bass staff contains a simple accompaniment. There are repeat signs and first endings marked with a 'y' above the staff.

Musical notation for the second system of the song. It consists of a treble clef staff and a bass clef staff, both in 6/16 time and B-flat major. The treble staff contains the melody with lyrics: "tu li yo na yo tu je nge ka ni sa kwa kwa ma to le o ja po ni". The bass staff contains a simple accompaniment. There are repeat signs and first endings marked with a 'y' above the staff.

Musical notation for the third system of the song. It consists of a treble clef staff and a bass clef staff, both in 6/16 time and B-flat major. The treble staff contains the melody with lyrics: "ki do go tu i je nge nyumba nyu mba ya ke Mu ngu ke Mu ngu". The bass staff contains a simple accompaniment. There are repeat signs and first endings marked with a 'y' above the staff.

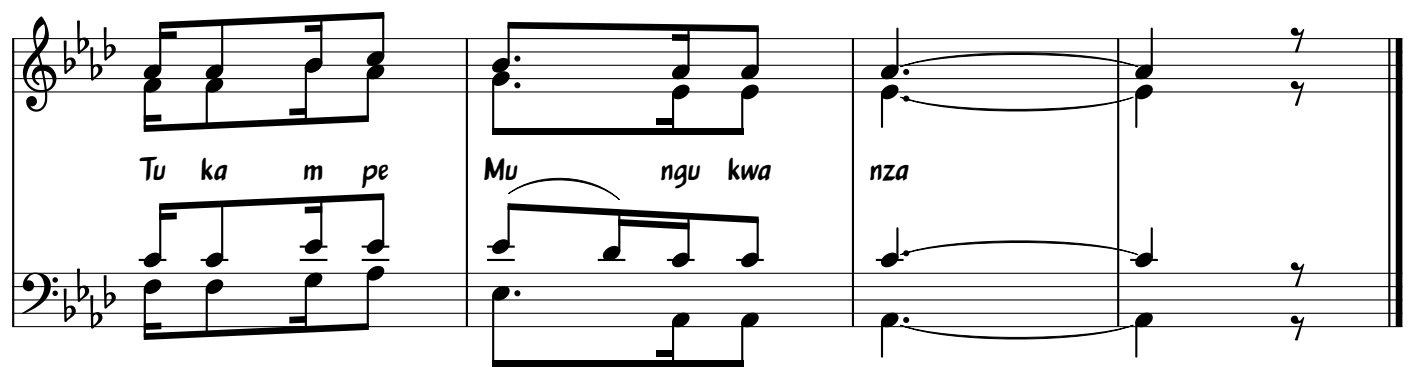
1. | 2.



1 . Tu pa nde mi li ma ni tu ka i le te mi ti
 Tu ka i je nge nyu mba nyu mba nyu mba ya Bwa_____ na

2 . To a u li cho na cho ndu gu kwa u ka ri mu
 Tu a kwa mo yo wa la si o kwa u ta ji_____ ri

3 . Pu ngu za za ku nywe a po mbe pi a ku vu ta
 Pu ngu za za ku su ka nywe le na vi go do_____ ro



Tu ka m pe Mu ngu kwa nza