

# AHSANTE YESU KWA KUTUKOMBOA

Composer IRA. M. Jules  
Date 01 April 2023  
Rumonge-Burundi  
Kwaya ya Mtakatifu  
Mwenye Heri Anuarite

*Wimbo wa Kushukuru  
kipindi cha Pasaka*

Milele nitakutukuza

♩. = 90

Kiitikio

A a hsa nte Ye su kwa a ku tu ko mbo a tu na ku shu ku ru  
A a hsa nte Ye su kwa a ku tu shi ndi a tu na ku shu ku ru

o ho  
a ha

ee Ye su tu na kushu ku ru mwo ko zi  
ee Ye su kwa ku m shi nda she ta ni

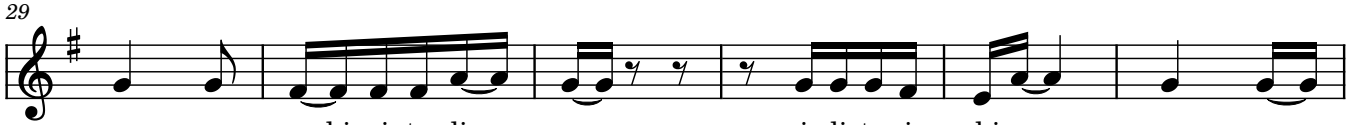
F r e e O r g a n tu na ku shu ku ru ee Ye su kwa ku  
tu na ku shu ku ru

ko mbo a ma i sha ye tu ee mwo ko zi ee Ye su kwa ku m shi nda mwo vu she ta ni.

## 23 Mashairi



1. Tu na ku shu ku ru ee Ye su we tu, kwa ku tu ja li a u ha i  
 2. A hsa nte— Ye su kwa ku fu fu ka, u ka ka ta— ka mba— za



na ngu vu hi zi tu li zo na zo i li tu i shi ve ma ee—  
 ma u ti— i li si— si— tu si je tu ka fu ngwa na zo



Ye su tu na ku shu ku ru.  
 we we Ye su wa tu pe nda.



3. Ni kwe li u me m shi nda mwo vu she ta ni a na ye ha ri bu ma i sha  
 (Na sa na)



ye tu tu ka ji ku ta tu ko ka ti ka dha mbi la ki ni we we wa tu pe

48

nda u ka tu ko mbo a a lle lu ya a hsa nte Ye su a hsa nte a hsa nte

53

Ye su (a ha) a hsa nte kwa ku tu ko mbo a ku to ka dha mbi za ma

58

u ti a hsa nte Ye su mwo ko zi twa ku shu ku ru (u hu) a hsa nte  
Ye su mwo ko zi twa ku shu ku ru (u hu) a hsa nte

63

Ye su a hsa nte twa ku shu ku ru - Organ

67 Shairi la kumaliza wimbo kabisa:

=> Ee Ye su u li - sema - u ta - ku fa na si ku si ku ya ta tu u ta fu

74

fu ka ka ti ka wa fu na sa sa tu me ya o na ya le u li yo sema (a ha)  
(ni kwe li)

80

ya me ti mi a te na u me ya kombo a ma i sha ye tu F r e e O

87

r g a n . te na kwa ki fo cha ko ee Ye su wa ka ti u li po la zwa

93

ka bu ri ni u me tu li za - mi o yo ya wa tu wa li yo ku fa tu na ku shu ku ru ee

99

Ye su mwe ma (ha) kwa ku ko mbo a ma i sha ye tu tu na ku shu ku

This system contains measures 99 through 105. It features a grand staff with treble and bass clefs, a key signature of one sharp (F#), and a common time signature. The melody is written in the treble clef, and the accompaniment is in the bass clef. The lyrics are: "Ye su mwe ma (ha) kwa ku ko mbo a ma i sha ye tu tu na ku shu ku".

106

ru tu na ku shu ku ru ee Ye su tu na ku shu ku ru kwa ku ji to a ku wa

This system contains measures 106 through 110. It features a grand staff with treble and bass clefs, a key signature of one sharp (F#), and a common time signature. The melody is written in the treble clef, and the accompaniment is in the bass clef. The lyrics are: "ru tu na ku shu ku ru ee Ye su tu na ku shu ku ru kwa ku ji to a ku wa".

1. 2.

111

pa sa ka ye tu tu na ku tu. Fine

This system contains measures 111 through 113. It features a grand staff with treble and bass clefs, a key signature of one sharp (F#), and a common time signature. The melody is written in the treble clef, and the accompaniment is in the bass clef. The lyrics are: "pa sa ka ye tu tu na ku tu." The system ends with a double bar line and the word "Fine".