

KARIBU KWETU

Makungu Norbert
Chorale St Anne Marie Parades
Of Mukungu
Burundi
+25769690957

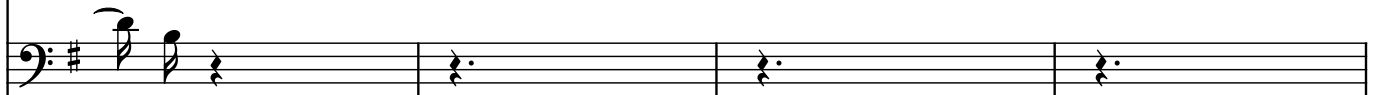


Si ki li za a a m pe ndwa wa ngu ta ya ri a me bi sha ho -
ko m pe ndwa wa ngu sha u ku ya ko ni juu ya -

Ni fu ngu li e m pe nzi wa
Na mi ni wa ko m pe nzi wa



ngu le o na ku ja ku i shi na
ngu dha mi la ya ngu ku i shi na

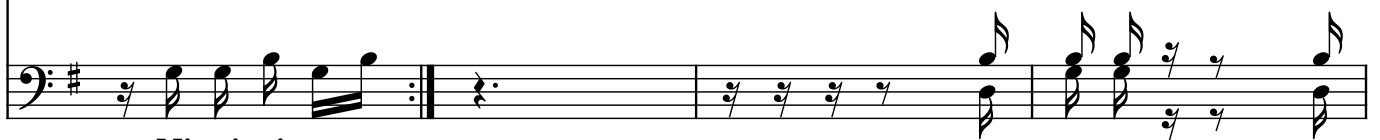


- di
- ngu

1. 2. Kiitikio



we we. Ka ri bu (wi - fi) ka ri (wi fi) ka



Mi mi ni wa



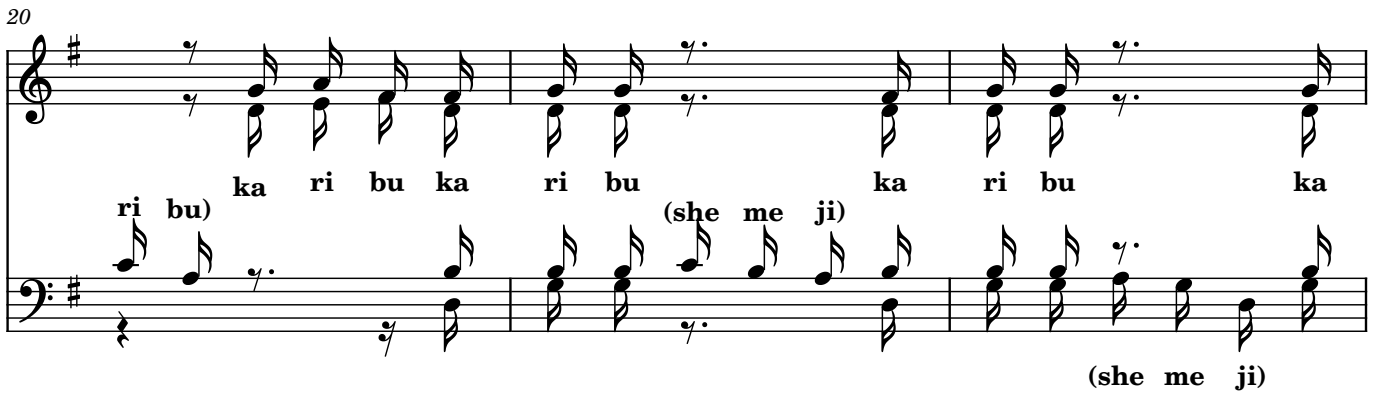
ri bu (wi - fi) ka ri bu (wi fi) ka ri bu kwa ka ka ye tu (ji





na la mme) ka ri bu kwe tu ka ri bu (she me ji ka

20

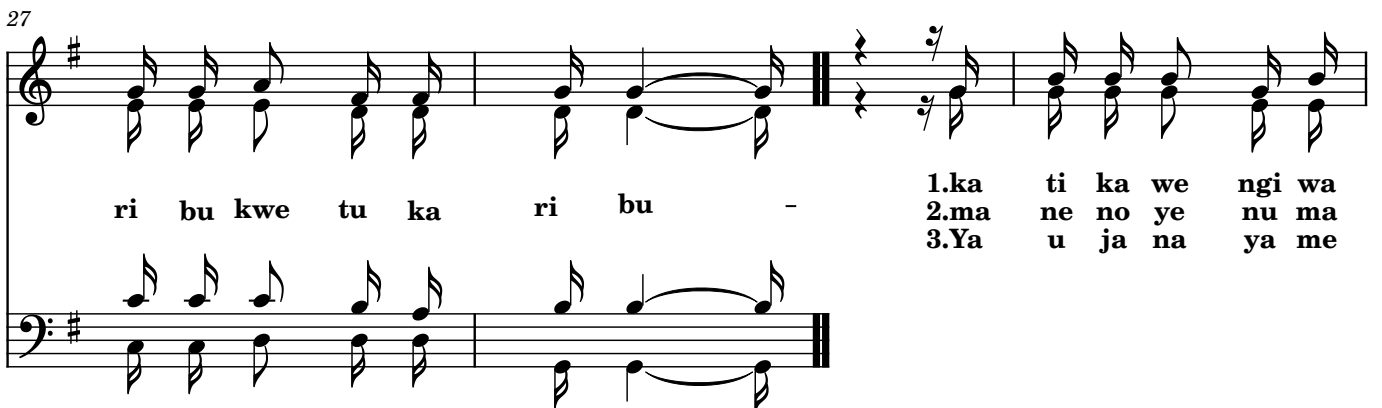


ri bu) ka ri bu ka ri bu (she me ji) ka ri bu ka (she me ji)



ri bu (she me ji) ka ri bu kwa ka ka ye tu (ji na la mme) ka

27



ri bu kwe tu ka ri bu -

1.	ka	ti	ka	we	ngi	wa
2.	ma	ne	no	ye	nu	ma
3.	Ya	u	ja	na	ya	me

31

zu ri we we a li ku cha gu - a u we ki pe nzu cha -
 zu ri e nzi za u chu mba we - nu le o ya me ti mi -
 pi ta m je nge ma i sha ma - pya Mu ngu a wa ba ri -

35

- ke - e he e he - a he - ka ri bu _____
 - a - e he e he - a he - ka ri bu _____
 - ki - e he e he - a ha da i ma _____