



# MSIFUNI BWANA EE YERUSALEMU

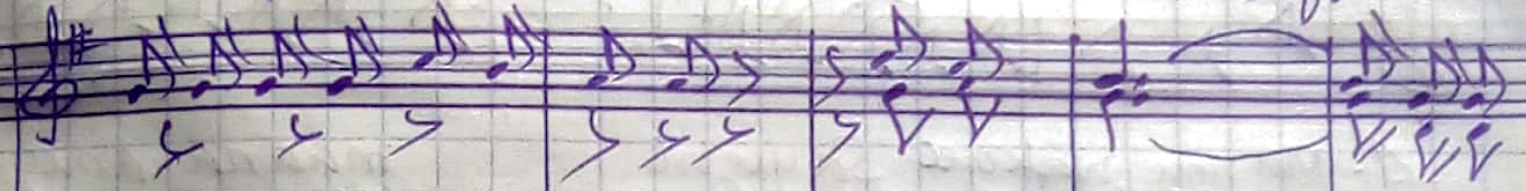
(26)  
TPl ya Mwili na Damu ya Y-Kristo  
Katikati; Zab: 147.

Na: PRA. M. Jule  
Date: Oktob. 2023  
Kirembo - Sud

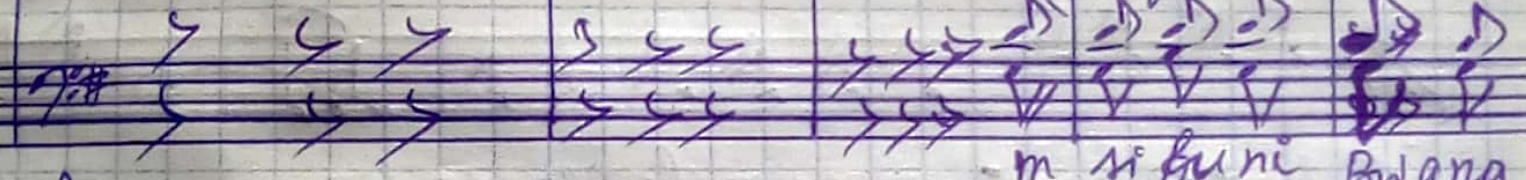
Chorus:



Msifu ni Bwana ee Yerusa le mu m si fu ni



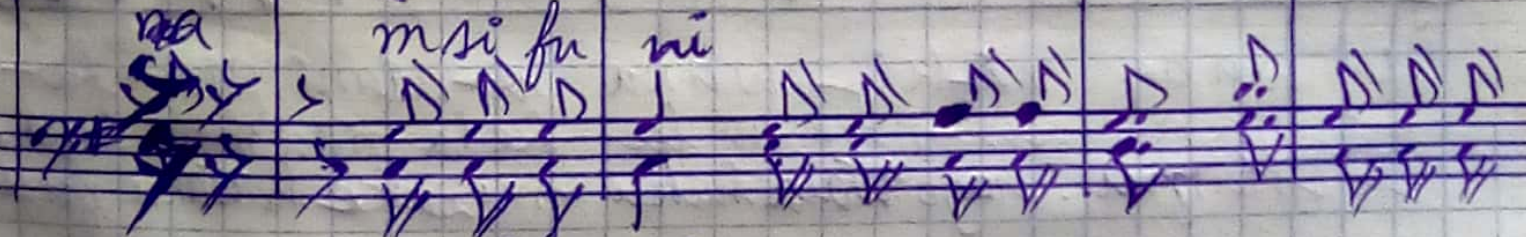
Bwana ee Yerusa le mu MSIFU ni m si fu ni  
m si fu ni Bwana



m si fu ni Bwana

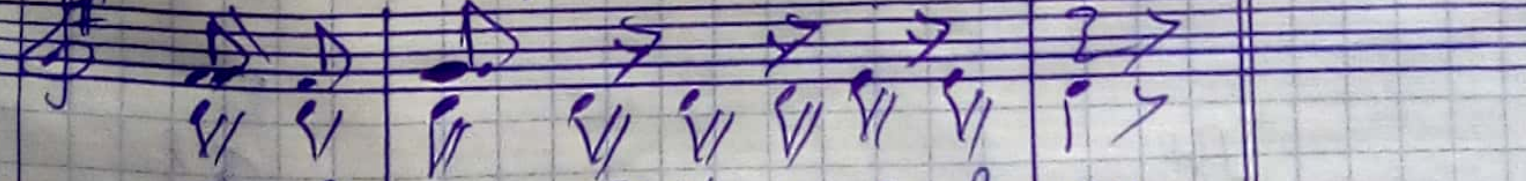


fu ni ee Yerusa le mu ee Yeru



m si fu ni

m si fu ni



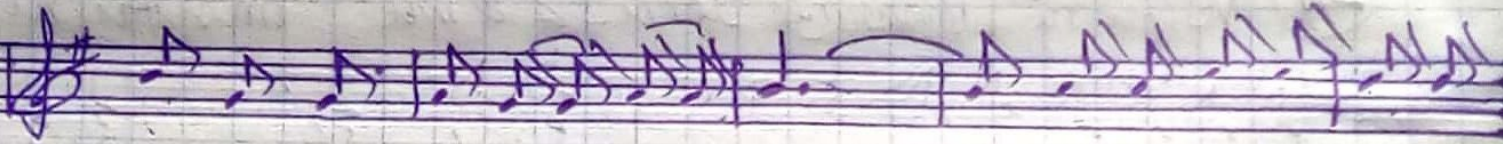
sale mu ee Yerusa le mu



\* Verses:



1. Msiifu ni Bwana Eyeru sa le mu msifu ni
2. Aduye - a fanaye - a ma ni mi paka
3. Hum hubi ri ya ko ne no la ke na Isra



1. Mu ngu wako ee sayu ni maana ameya
2. ni m wako akushi bi shaye kwa uno no wanga
3. e li a m ri - za - ke na hukumu zake



1. kaza magi go ya malango ya ko - ame
2. no huije ke ka am ai ya ko - juu
3. habuli te ndea tai fa le lote mambo



1. waba ri ki - wana o ndani ya ko -
2. yan chi - nare no la ke la giga mte sana.
3. ~~Kampa~~ hayo wala huku muzake hataku gua.

Mungu ni ongoze mimi ndogo Juba

Wimbo umenakilwa  
na: IRA, M. Juba