



WAPENDENI ADUI ZENU

(Matayo: 5:43...)

No: TRA. M. July
Date 20.06.023
Kiremba-sud
(Bururi)

polopole:

Musical notation for the first system, including a treble clef, a key signature of two sharps (F# and C#), and a 3/8 time signature. The melody is written on a single staff with notes and rests.

Mpesiki a Kwambai me ne-nwa um pende

Musical notation for the second system, including a bass clef and a key signature of two sharps. The accompaniment is written on a single staff with notes and rests.

Musical notation for the third system, including a treble clef and a key signature of two sharps. The melody is written on a single staff with notes and rests.

Jirani yako na umchukie a dui yako

Musical notation for the fourth system, including a bass clef and a key signature of two sharps. The accompaniment is written on a single staff with notes and rests.

Musical notation for the fifth system, including a treble clef and a key signature of two sharps. The melody is written on a single staff with notes and rests.

Lakini mimi na waambi a wapende ni adu

Musical notation for the sixth system, including a bass clef and a key signature of two sharps. The accompaniment is written on a single staff with notes and rests.

Musical notation for the seventh system, including a treble clef and a key signature of two sharps. The melody is written on a single staff with notes and rests.

e ze--nu waombe ni wana

Musical notation for the eighth system, including a bass clef and a key signature of two sharps. The accompaniment is written on a single staff with notes and rests.



wa u-dhi. organ.



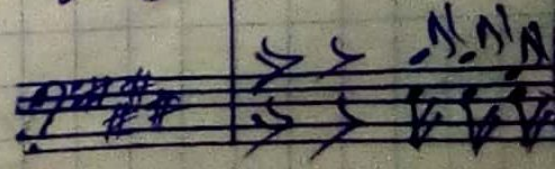
1. I li m pate kuwa wa na wa Baba yenu
2. Kwamaa nayeye hua ngazia ju a la
3. Je - m lei wa penda wa mare wa penda mwa
4. Je - m kiwa a m lei a ndugu ze nu tu



1. ali ye mbingu ni tena m kawa waka mili
2. ke wao u na we matena huyeshea - mwa
3. pata hawa bu ga ni angalia hata wato
4. mnate ndate ndo gani laza da hata wa



1. fu kamaye ye ali ryo m ka mi	lifu wapende
2. a wenye haki - nawa si	haki ni muhi
3. za ushuru nao - hawa fanyi	hayo basitu
4. tu wa mata lfa - hawa fanyi	hayo basitu



1. ru - a du ze nu a du i
 2. mu ku wa penda ma a a du i
 3. fanya ye yape nde za e Mungu
 4. a che ku bagu a na kati i ti

1. ze nu.
 2. ze tu.
 3. we tu.
 4. ye tu.

Copied by: JIRAM

(84)