

Tiririsha Baraka (TOP! TOP!)

FINAL

By Paschal VK(PAVEKO)

0752863684

13/1/2023 SONGEA

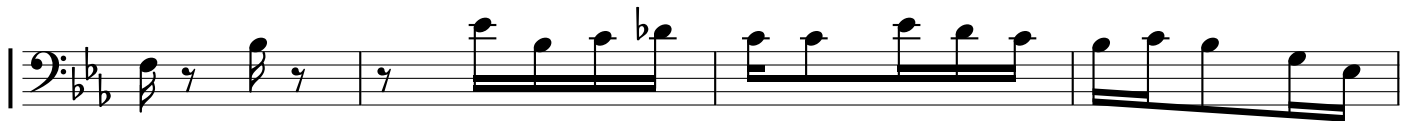
STANZA



1 . A sa nte kwa ki - la ja mbo la to ka kwako li we ba
2 . Ja mbo ba ya twa o mba Bwa na li pi te mba li kwama pe



ya li - we zu ri twa kushu ku ru U na le ta mvu a kwawa tu
nzi na we ma wa ko twa kushu ku ru kwa ni we we Bwa na mu we za



wo te mwa nga wa ko u na tu mu li ki a wo te we
yo te u me tu u mba kwa m ko no wa - ko kwa m

1.

2.



ma na wa ba ya u na le ta ma na wa ba ya
fa no - wa ko kwa ni we we fa no - wa ko

KIITIKIO

Ti ri ri sha

Musical score for the first system of 'KIITIKIO'. It consists of a treble and bass staff in B-flat major. The melody starts with a quarter rest followed by a quarter note G4, then eighth notes A4-B4-C5. The lyrics are: Ti ri ri sha Bwa na Ba ra ka za mbingu ni zo te ti ri ri sha. The piece ends with a double bar line and repeat dots.

Musical score for the second system of 'KIITIKIO'. It continues from the first system. The lyrics are: Bwa na kwa wa tu du ni a ni ko te ti ri ri sha Bwa na Ba ra ka. The first ending is marked with a '1.' and a repeat sign. The piece ends with a double bar line and repeat dots.

Musical score for the third system of 'KIITIKIO'. It begins with a '2.' marking. The lyrics are: ko - te tu ja zi e m pa ka zi ja e TOP TOP Ti ri ri sha. The melody features a descending eighth-note line in the second ending. The piece ends with a double bar line and repeat dots.

Musical score for the fourth system of 'KIITIKIO'. The lyrics are: Ba ra ka na Ne e ma TOP TOP Tu shu shi e m pa ka zimwa gi ke po. The melody continues with eighth-note patterns. The piece ends with a double bar line and repeat dots.

1. | 2.

te tu li po tu ja zi e te tu li po

HITIMISHO

Zi wa fi ki e Ba ra - ka za ko na wa gonjwa ku le ma wo di ni
Ne e ma ya u ta ka - so wa ko na u pa ko wa ko u wa fi ke

ni

Kwa wa li o o fi si wa shu shi e na ko TOP TOP
kwa wa li o mi ta a

ni

kwa wa li o ma ju mba ni wa shu shi e na ko TOP TOP
kwa wa li o sa fa ri ni

te re m sha tu po ke e wa na o tu li o ha pa te re m sha tu po ke e

1.

2.

wa na o tu li o ha pa li o ha pa