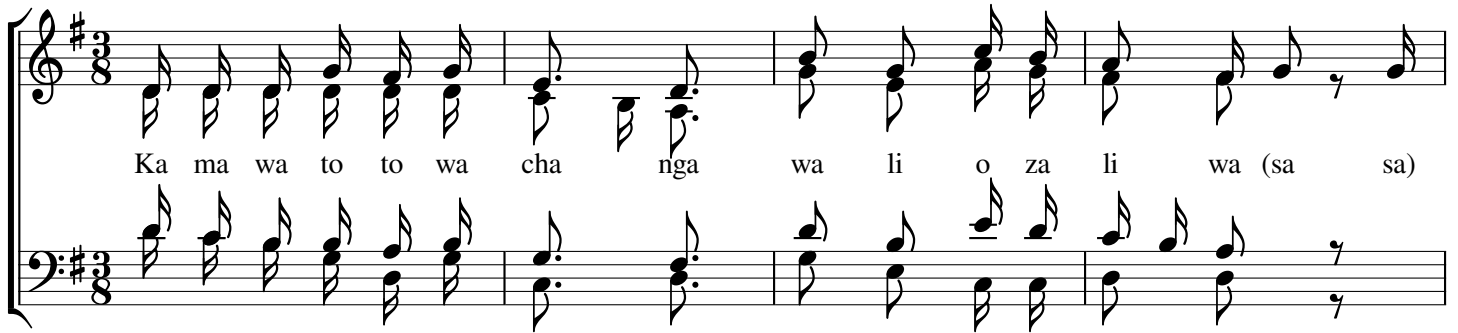


KAMA WATOTO WACHANGA

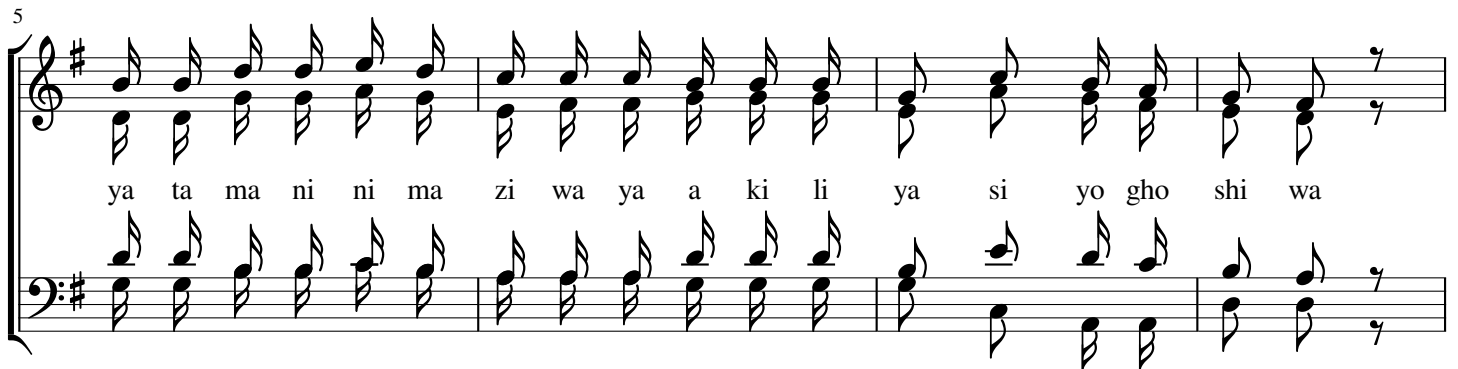
E. E. Muganyizi
2023

♩ = 60



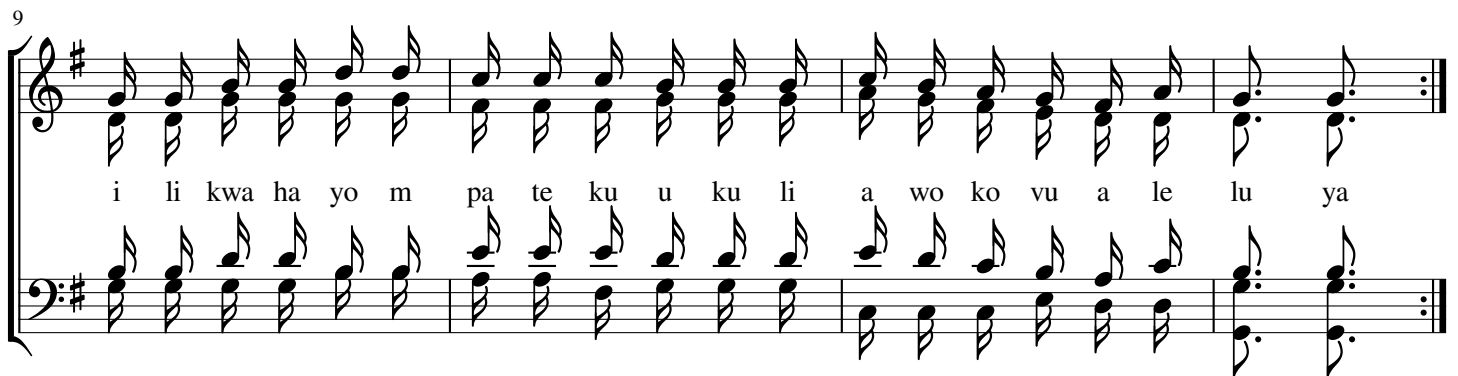
Ka ma wa to to wa cha nga wa li o za li wa (sa sa)

5



ya ta ma ni ni ma zi wa ya a ki li ya si yo gho shi wa

9



i li kwa ha yo m pa te ku u ku li a wo ko vu a le lu ya

13



1.I ki wa m me o nja ya kwa mba Bwa na ni mwenye fa dhi li m mwende e

18



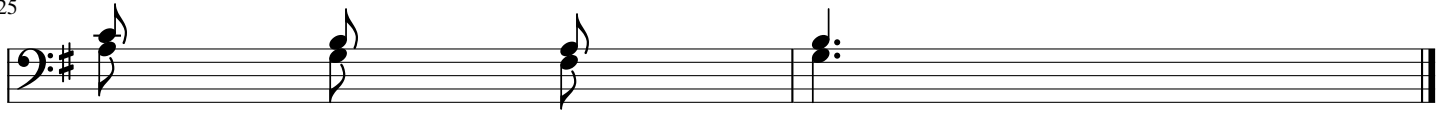
ye

20



2.Ji we wa li lo ka ta a wa a shi li me ku wa ji we ku - u

25



la

pe

mbe

ni