

MAZIMBU NI YETU

(*Hamasa ya ujenzi*)

NA MATHEW, L, CHRISTOPHER

SUA, MAZIMBU

$\text{♩} = 86$

Typed by martin allay, 0627971353, martinmathias1300@gmail.com

11/5/2023

Musical score for the first system of 'Mazimbu Ni Yetu'. It features a grand staff with a treble clef and a bass clef. The key signature is one sharp (F#) and the time signature is 6/16. The melody is written in the treble clef, and the accompaniment is in the bass clef. The lyrics are: Kwamaombezi ya ke mari a co nso la -----ta Tuna e nda ku li je ngaka ni sa le tu kwama ombezi.

Musical score for the second system of 'Mazimbu Ni Yetu'. It features a grand staff with a treble clef and a bass clef. The key signature is one sharp (F#) and the time signature is 6/16. The melody is written in the treble clef, and the accompaniment is in the bass clef. The lyrics are: yake mtaka ti fu Don Bo---sko Tuna e nda kuli jengaka ni sa le tu wa-- ge ni na wenye ji karibuni baba ki nama mawa toto.

Musical score for the third system of 'Mazimbu Ni Yetu'. It features a grand staff with a treble clef and a bass clef. The key signature is one sharp (F#) and the time signature is 6/16. The melody is written in the treble clef, and the accompaniment is in the bass clef. The lyrics are: wotetuchangi e Ma zi mbu ni ye tu kwahakika tu cha ngi e ni kina ni nitunyanyuke tunyanyuke pi a na vija na ni tu i nu ke kwa maana.

27

tu-nyanyuke nyanyukandugu
shughulihii i na tu hu su ma zi mbu ni ye tukwahakika tuchangi e ni twa shu ku ru kwakemwenye wa na tu pe

35

1.

zikwakutupa hawawale zi--- nda Ba ba pa ro ko na pa ro ko msa i di zi Ba ba pa ro ko na pa ro ko msa i di zi kwaha ki ka ndanasipia

Ba ba-----pa ro ko-----na pa ro ko msa i di zi

42

2.

zi zi m ta za me ti m ta za me Ba ba Pa ro ko -- na --Pa --- ro ko m sa i di zi na Ba -----baTe ti Ba baDi te nya na----- Ba ba Di te nya----- Ba ba-----Di te nya-----na ---

49

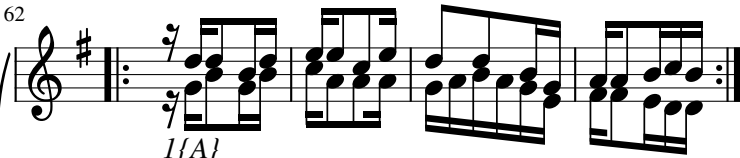
D.C. al Fine

Fine

Ba---baTe--- ti ma zi mbuniye tukwahakika tuchangi e. ni

MAIMBILIZI

62



1(A)

Changiau jenziwaka ni sa e we mkatoliki,

1(B)

Uta pata barakaza ke mu-ngu- wai sraeli

TENOR & BASS; MIMI SITANYAMAZA KAMWE-----,

2(a)

Hataenzi zile sule mani---a li jengahekalu,

2(b)

Akabarikiwa mali nyi-ngi-nawi ngiwahekima.

TENOR & BASS; MIMI SITANYAMAZA KAMWE-----

3(a)

Fedhanazomalitulo na--zo--vyotevyatokakwake,

3(b)

Ametupa, bure ili kwa--vyo--tu mtukuzeyeye.

TENOR & BASS; MIMI SITANYAMAZA KAMWE-----

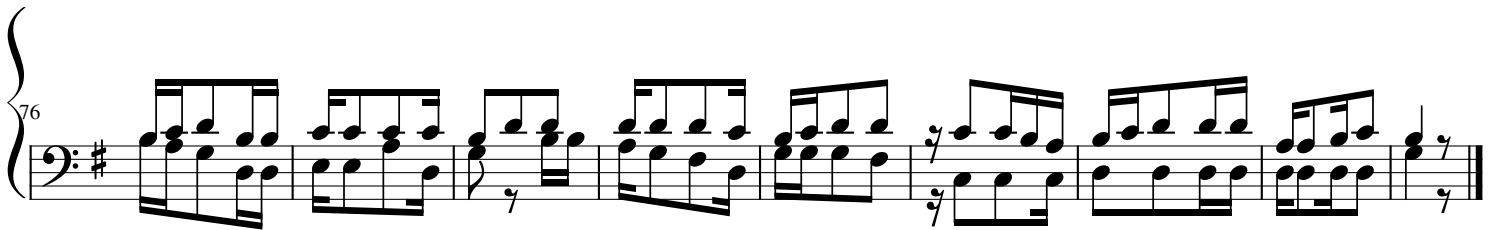
4(a)

Ewenduguya--ngu----a---cha-kung'ang'aniamali,

4(b)

Fanya maamuzi kwa kuweka akiba ya mbinguni.

TENOR & BASS; MIMI SITANYAMAZA KAMWE-----



Mi mi si ta nyamazaka mwe hata ni ta ka po m je nge a mungu-----wa --nguheka lu ta kati fu