

MIMI NA NYUMBA YANGU!!

By:- Peter G. Mwamba

MUSOMA
MARA

Graziose...

S
A

Mi mi, na nyumba ya ngu, ni ta m tu mi ki a Bwa na mi
ya ngu

T
B

ya ngu

Detailed description: This system contains the first two staves of music. The top staff is for Soprano (S) and Alto (A), and the bottom staff is for Tenor (T) and Bass (B). The key signature has three sharps (F#, C#, G#) and the time signature is 2/4. The music is in a 'Graziose' style. The lyrics are: 'Mi mi, na nyumba ya ngu, ni ta m tu mi ki a Bwa na mi ya ngu'.

4

le le, na ku ta nga za, ma ten do ya ke wa ka ti wa u ja na ka bla ya u ze e

Detailed description: This system contains the next two staves of music. The top staff is for Soprano (S) and Alto (A), and the bottom staff is for Tenor (T) and Bass (B). The key signature and time signature remain the same. The lyrics are: 'le le, na ku ta nga za, ma ten do ya ke wa ka ti wa u ja na ka bla ya u ze e'.

8

1. 2.

wa ngu. Mi wa ngu. Ni ta wa a m sha A su bu hi, wo te wa

Detailed description: This system contains the final two staves of music. The top staff is for Soprano (S) and Alto (A), and the bottom staff is for Tenor (T) and Bass (B). The key signature and time signature remain the same. The lyrics are: 'wa ngu. Mi wa ngu. Ni ta wa a m sha A su bu hi, wo te wa'. The system includes first and second endings for the first two measures.

12

u li mi wa ngu u i mbe,

ka a o ka ti ka nyumba ya ngu, u li mi, u li mi wangu na u i mbe

16

ni a che na ma ba ya yo te

si fa za Bwa na, si ku zo te ni a che, ma ba ya yo te

ma ba ya yo te

20

ni te nde ya li yo me - ma, ni li ta je ji na la Bwa na. Ka

24

ti ka ku sa nyi - ko, ka ti ka ku sa nyi ko ku - bwa,

Ku sa nyi ko ku bwa ku bwa ka ti ka

28



1.Ni i mbe wi mbo ga ni, u we ka mashu kra ni kwa ko Mu ngu

32



a u ni che - ze ngoma ga ni, Mi mi ni nli ye ki u mbe wa ko,

Bwa -

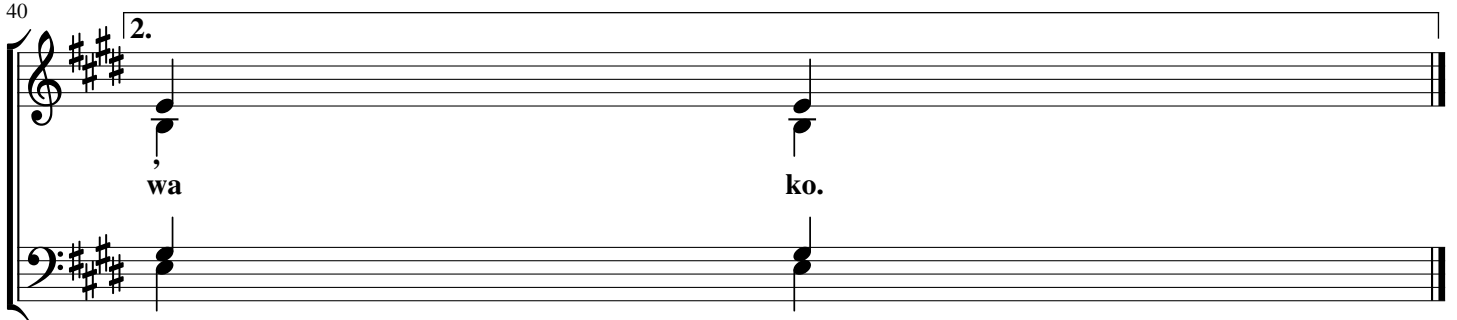
36



na Haku na cho - cho te ki ta ka cho li nga ni shwa na we ma wa ko,

Bwa -

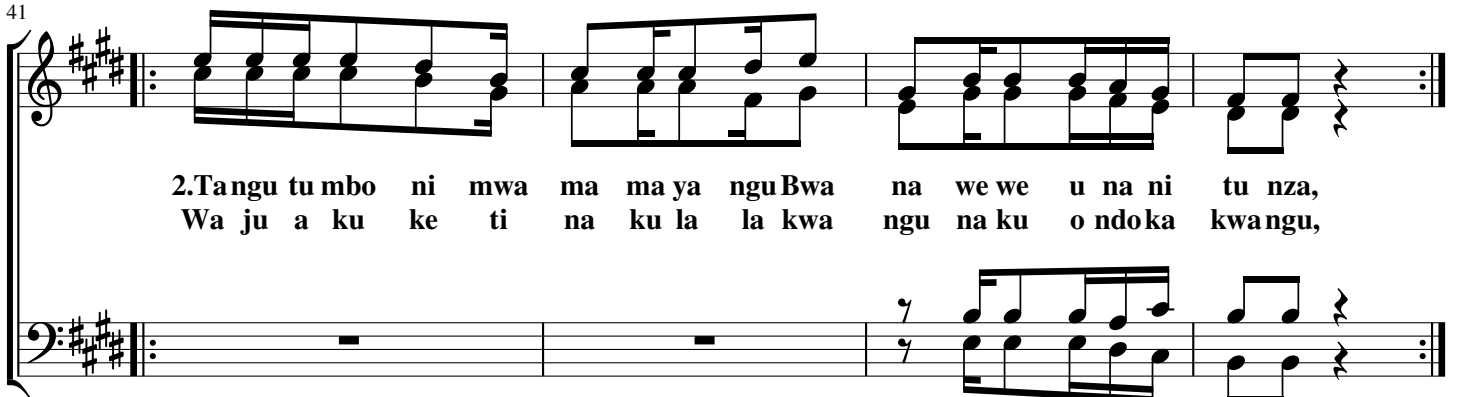
40



wa

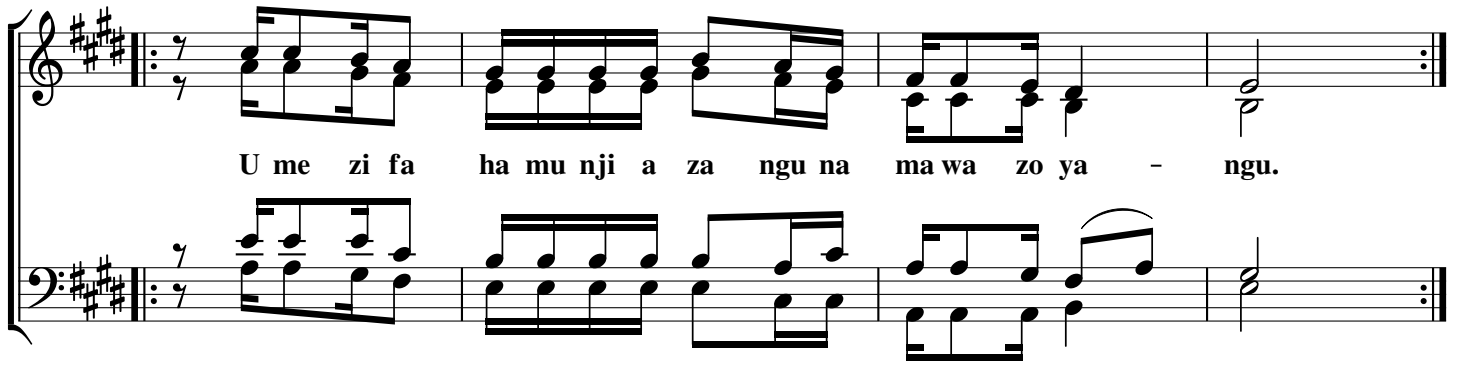
ko.

41



2.Tangu tu mbo ni mwa ma ma ya ngu Bwa na we we u na ni tu nza,
Wa ju a ku ke ti na ku la la kwa ngu na ku o ndoka kwangu,

45



U me zi fa ha mu nji a za ngu na ma wa zo ya - ngu.

49



3.EeBwa na u ni i ma ri she, ni si ka te ta ma a ka mwe, u ni fu

53



ndi she ku vu mi li a kwaha li yo yo - te, ni ya vu mi li e

58



yo te, wa la ni si le ge - e.

Umechorwa Na:-Zacharia Mganga "ZaM"
Mawasiliano:- 0749 497 955 / 0676 497 955,
0685 211 313 / 0627 293 272.
Barua Pepe:- mganga812@gmail.com