


# BWANA USIKIE SAUTI YANGU.

Mwl. Bruno C. Nkwabho

0766 535 644

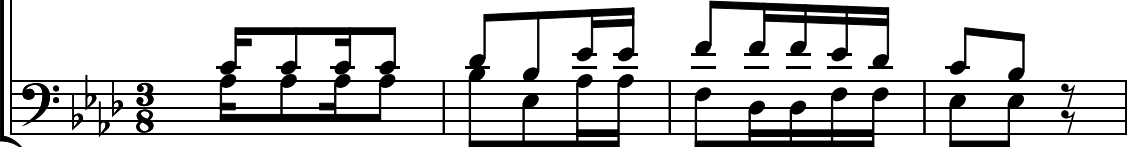
Mulera, Kigoma

Soprano/Alto

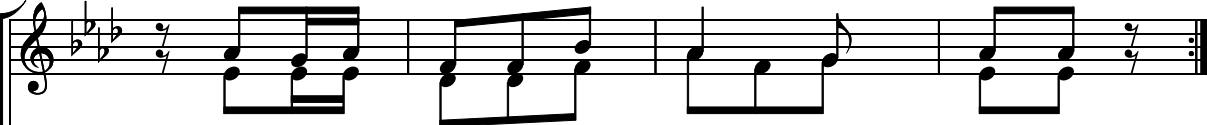


Bwa na na ku o mba u si ki e sa u ti ya ngu,

Tenor/Bass




S./A.

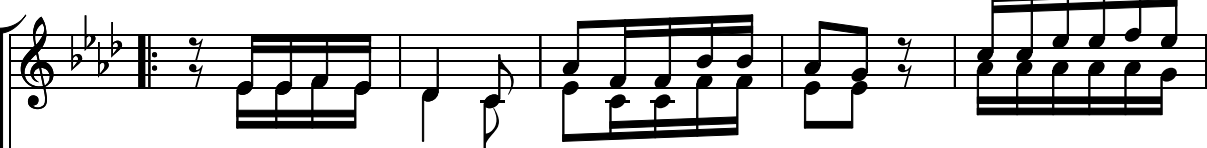


u ki si ki e Ki li o cha ngu

T./B.

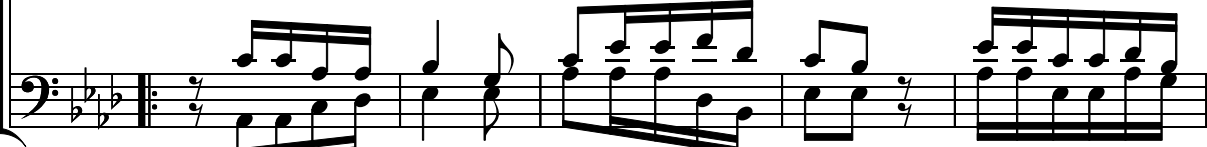


S./A.




Ni na ta nga ta nga si na Ma tu ma i ni na ku si hi u po

T./B.

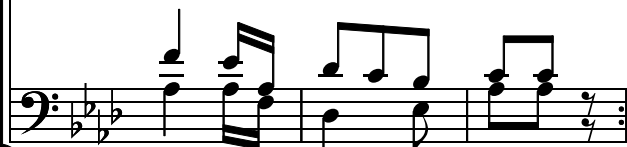


S./A.



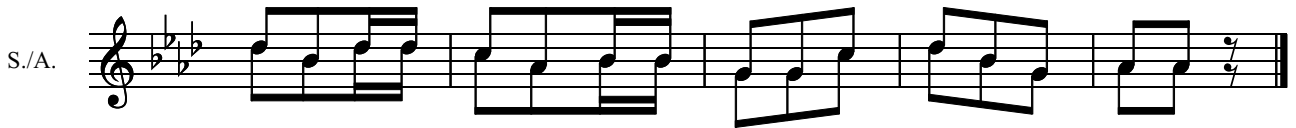
ke e ma o mbi ya ngu.

T./B.





1.To ka mwi sho wa n chi ni ta ku li li a Bwa na ni o  
2.Kwa ma a na we we ni ki mbi li o la ngu Ngo me ye nye  
3.Ni ta ka a ka ti ka He ma ya Mi le le Ni ta ki mbi  
4.Ma a na we we Mu ngu U me zi si ki a Na dhi ri za



ngo ze ju u ya mwa mba wa ngu vu Ee Mu ngu wa ngu.  
ngu vu a du i a si ni pa te Ee Mu ngu wa ngu.  
li a Si ta ra ya mba wa za ko Ee Mu ngu wa ngu.  
ngu u me wa pa U ri thi wa o wa ku - ti - o.