

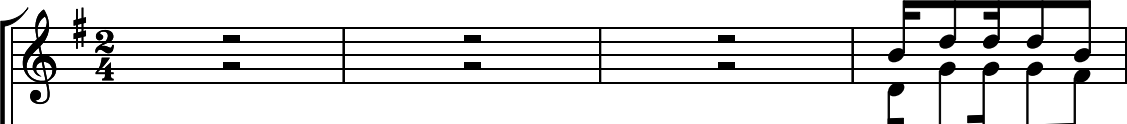
# NCHI YOTE IFANYE SHANGWE.

Mwl. Bruno C. Nkwabho

0766 535 644


Mulera, Kigoma

Soprano/Alto




Mwo ko zi Bwa na

Tenor/Bass



N chi yo te i fa nye sha ngwe kwa ni Bwa na


S./A.



Tu me pa ta

a me za li wa Tu me pa ta Tu me pa ta M ko mbo zi we tu

T./B.



a me za li wa Tu me pa ta Tu me pa ta M ko mbo zi we tu

S./A.



a me za li wa Kwa a ji li ye tu Wa na da mu M to to Ye su

T./B.



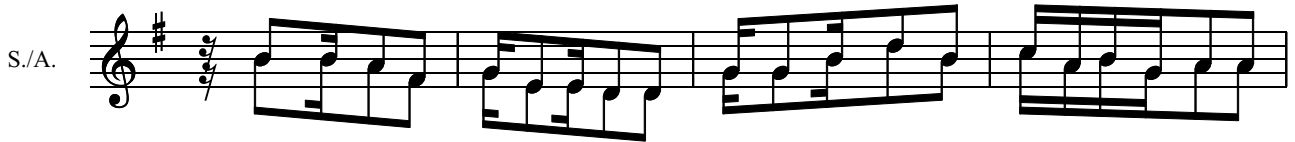
S./A.



a me za li wa

T./B.





1. Ma la i ka wa na fu ra hi kwa ku za li wa kwa ke M ko mbo zi
2. Ka za li wa E ma nu e li Bwa na ka wa fa ri ji wa tu wa ke
3. Mpe Bwa na U tu ku fu wa ke ye ye ni Bwa na wa Vi u mbe vyo te
4. Vi si wa na vyo vi fu ra hi ni sha ngwe ku bwa Bwa na ka za li wa



ndi ye Kri sto Bwa na mu we za yo te.  
ku ko mbo a Ye ru sa le mu ye tu.  
a me ku ja ku tu ko mbo a dha mbi.  
Pi a n chi yo te i sha ngi li e.