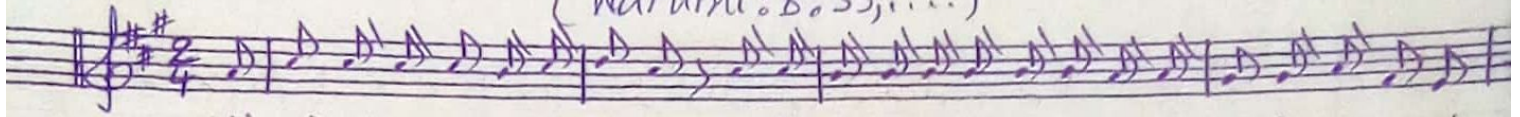


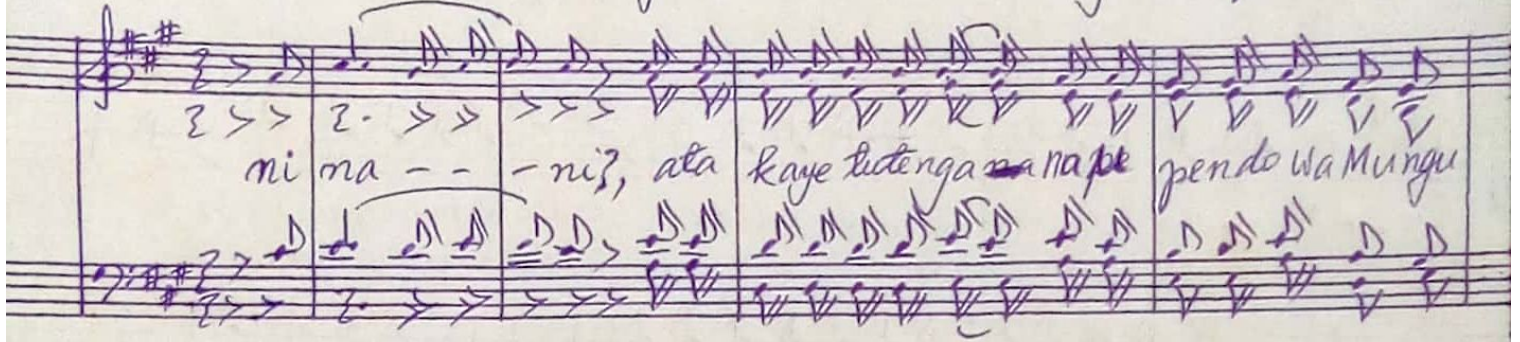
NI NANI ATARAJETUTENGANA ma UPENDO WA MUNGU.

Na: IRA. M. Tule
Tarehe: 21.02.2029
Makamba - Burundi

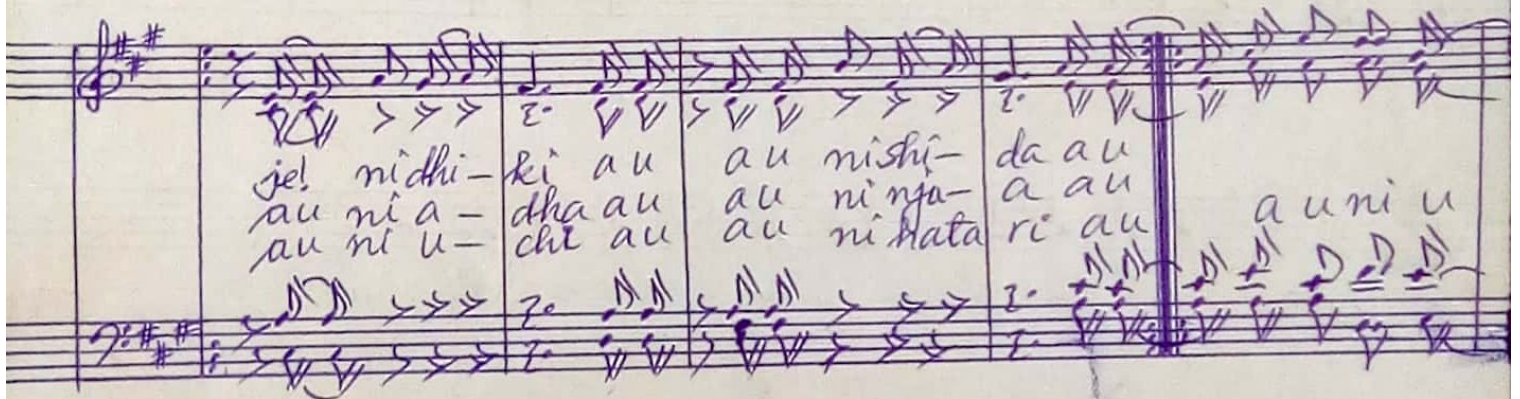
(Warumi: 8:35,....)



Mi mi ni na swali ki do go, laku u liza wenzangu mara fiki wa kristo



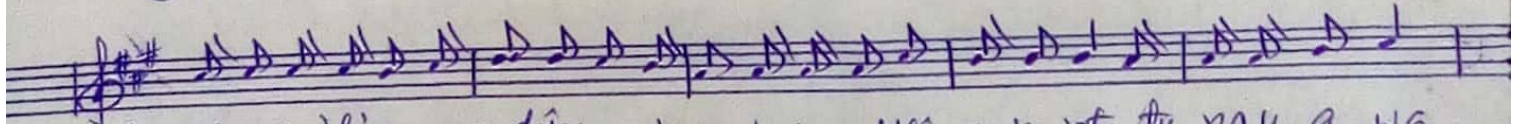
mi ma - - - ni?, ata kaye tutenga ~~na nape~~ pendo wa Mungu



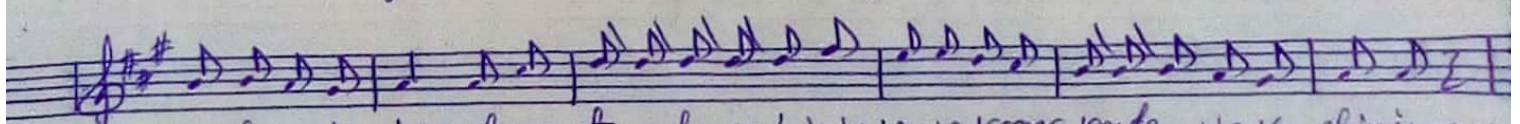
je! ni dhi - ki au au ni shi - da au
au ni a - dha au au ni nga - a au
au ni u - chi au au ni hata ri au a uni u



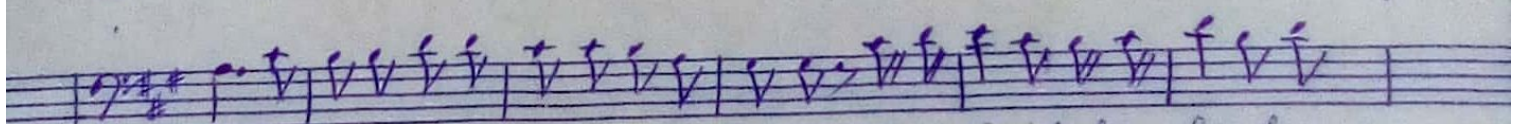
au ni upanga au upanga upanga -



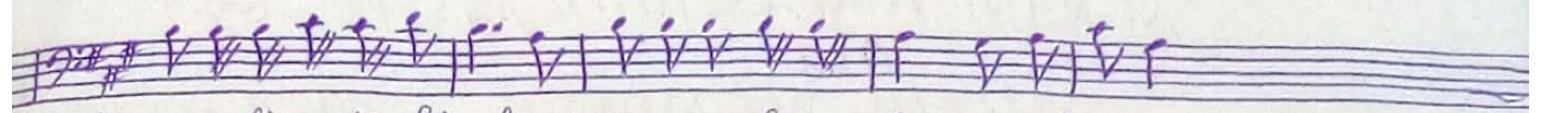
1. Kama ili nyo a ndikwayakwamba kwa ajili ya kristo tu nau a wa



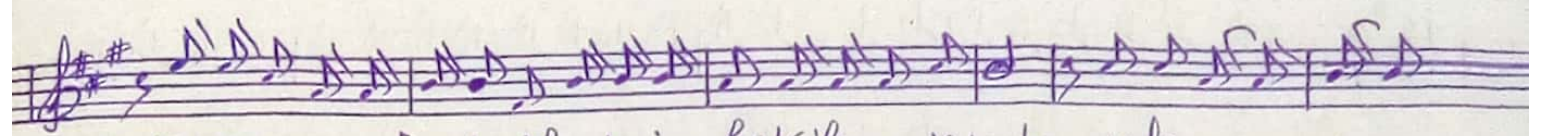
1. mchana ku twa tena tumehesabi wakawa kama kondo o wa ku chingwa -



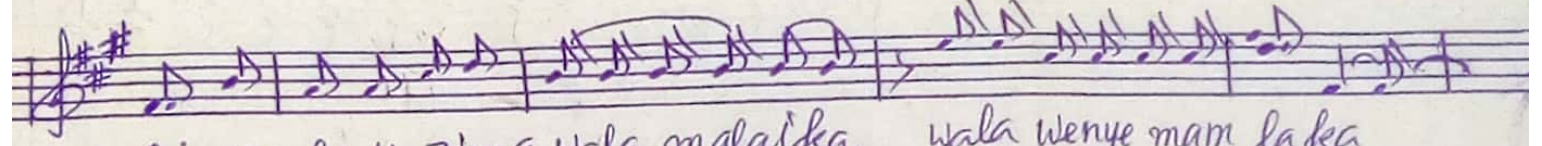
1. Daki ni katika mambo hayo yote, tuna shinda tuna shindana



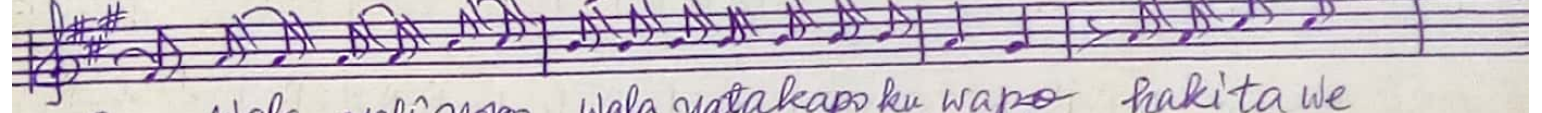
1. zaidi ya kushinda kwa yeye a liye tu penda basi + Minani



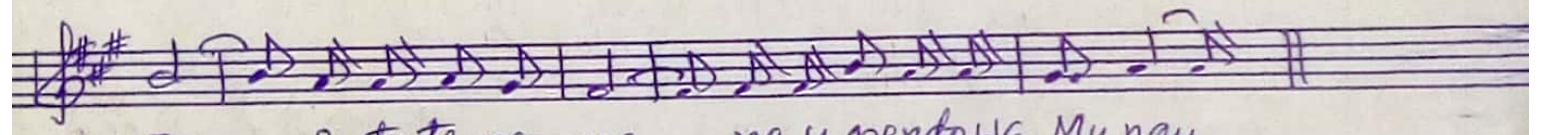
2. Kwamaanani mekwisha kujua hakika ya kwamba, wala ma- u-
 3. 1-1-1-1-1-1-1-1-1-1-1-1-1-1-1-1-1-1 wala yali yoju



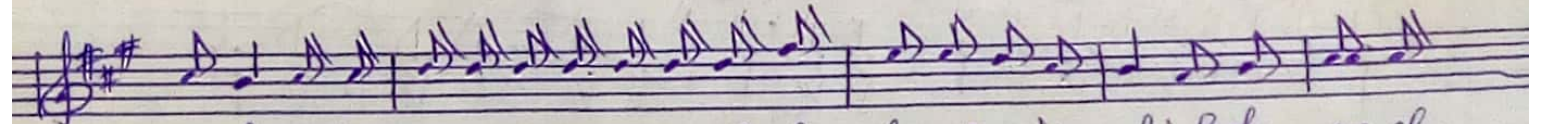
2. si wa la u zima wala onalika, wala wenye mam la ka
 3. u wa la yali yo chi- ni, wala ki'umbeko chote



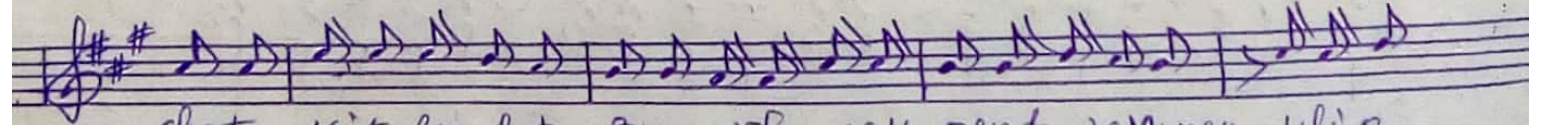
2. Wala yali yopo wala yatakapo ku wapo hakita we
 3. wa-la-ki-u-mbe-cho chote 1-1-1-



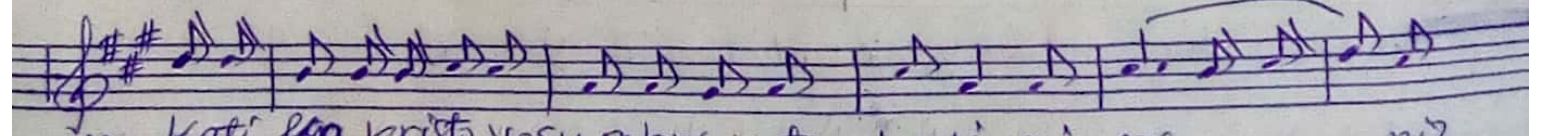
2. za kutute nga na na upendo wa Mungu
 3. 1-1-1-1-1-1-1-1-1-1-1-1-1-1



4. kweli tuki a ngalia na kutaba kari ni kweli haku na cho



4. chote kitaka dotu tunganisha na upendo wa Mungu, uli o



4. kati ~~ha~~ kristo yesu bwana wetu basi ni ma- - - ni?

Lasehe 13.08.2023
 Copied by: JIRAM