

# e mama yangu

  
Andante

TEST MUSIC MWESSWA MATENDA DIEUDONNE

\* Transposer le son -5

Violon



e mamaya-ngu ni na ku pe nda wa ndu- gu za ngu

\* Transposer le son -5

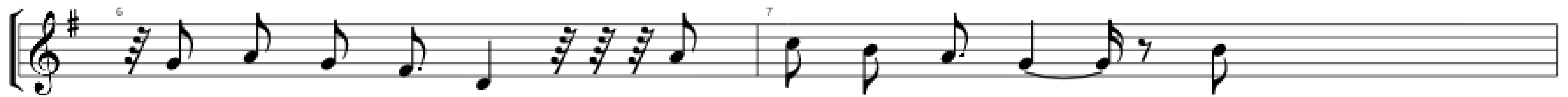
Violon



ni na wa pe nda na wa- pe nda wo te

\* Transposer le son -5

Violon



e ba ba ya ngu ni na ku pe nda ra

\* Transposer le son -5

Violon



fi ki za ngu ni na wa pe nda na

\* Transposer le son -5

Violon



wa pe nda wo te ma pe ndo u li o ni fu ndi

\* Transposer le son -5

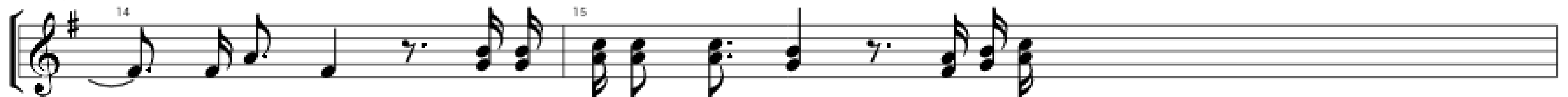
Violon



sha ma ma ma pe ndomu li o ni o ne sha

\* Transposer le son -5

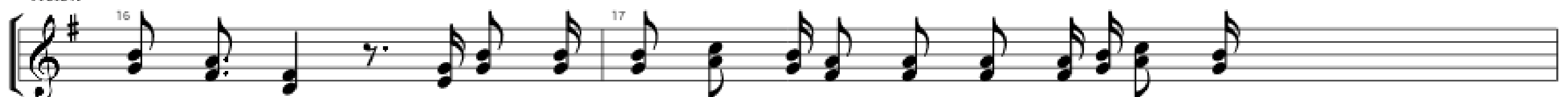
Violon



wandu gu ni na wa shu ku ru na shu ku

\* Transposer le son -5

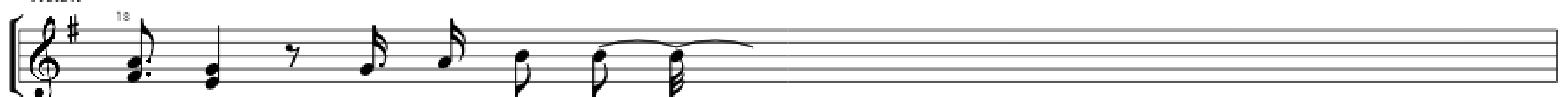
Violon



ru Mu ngu a li ye ni we ka ka ti ka fa mi li ya

\* Transposer le son -5

Violon



hi yo kwa u mo ja

\* Transposer le son -5

Violon

tu na o wo te mu ko no ku

\* Transposer le son -5

Violon

shi ka ma na kwanya ka ti zo te ku sa me he ya

\* Transposer le son -5

Violon

na a ku na ku te nga na e ma ma ya

\* Transposer le son -5

Violon

ngu u me ni fu nzame ngi u me ni pe nda ta ngu tumbo ni we we

\* Transposer le son -5

Violon

kwa sa ba bu na ku ta na wa da da we

\* Transposer le son -5

Violon

ngi wa me to sha mi mba ka bla mu to to ku

\* Transposer le son -5

Violon

za li wa i la we we ma ma u me i ti ka ku

\* Transposer le son -5

Violon

te swa i li mi mi ni za li we ni na ku shu ku ru

\* Transposer le son -5

Fantasia

we we ma ma u me i ti ka ku te swa i li mi

\* Transposer le son -5

Fantasia

mi ni za li we ni na ku shu ku ru