



Teresia wa Mtoto Yesu

Rukeha pb@Mbagalakuu.DSM
+255 754 567120

Te-re-si-a wa M - to - to Ye - su Mtaka-ti-fu Te-re - si-a wa M - to-to Ye__ su

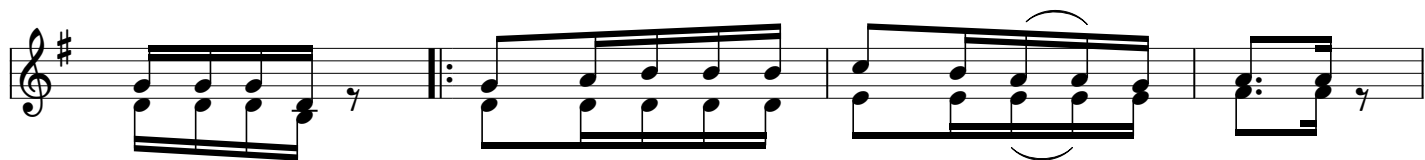
u-li - yete-u - li - wa ku-wa m - si-ma-mi - zi wawa - mi-si-o-na -
wewendiwe m - si-ma-mi-zi wawa - mi-si-o-

ri wote du-ni - a - ni uwa - o - mbe - e wami-si-o - na - ri.
na - ri wa-o-mbe - e Te - re -

organ

e-we ri.
si - a

O
R
=G=>
A
N

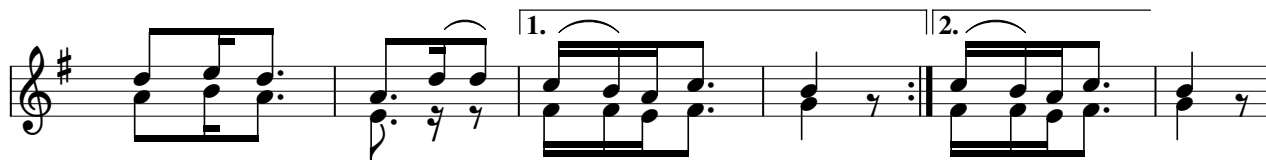


1. Wa-a - mi - ni

wo - te tu - shi - ri - ki ku - zi___ o - mbe - a
pi - a tu - cha - ngi - e kwa ha - li na ma - li

2. Ha - ya shi - me

wo - te tu a m - ke tu - shu___ hu - di - e
ha - yo ma - te - ndo ye - tu ya - we ka - mi - li



1. shughu - li
shu - ghu - li

za ki___ mi - si - o - na - ri,
za u - i - -

nji___ li - sha - ji.

2. i - ma - ni

ye - tu___ kwa_ ma - te - ndo,
kwa - ke Mu - ngu na - -

kwa_ ji - ra - ni.