


NLSHANGWE AMEZALIWA

By Philipo D. Mizungwe
Malela - Toangoma, DSM
5/11/2023

♩ = 70

Le - o ni sha - ngwe le - o ni - sha
ni sha - gwe ni sha - ngwe

Le - o ni sha - ngwe le - o ni sha -
ni sha - ngwe ku - bwa ni



ngwe le - o ni sha - ngwe
ni sha - ngwe ni sha - ngwe le - o nisha -

ngwe le - o ni sha - ngwe
sha - ngwe ni sha - ngwe ku - bwa ni sha - ngwe ni sha -



ngwe ni sha - ngwe ni shangwekwe - li a - meza - li - wa a - meza - li

ngwe



a-meza - li _____ wa

wa ka-za-li wa pa - ngo-ni Be - tle_ he - mupa-

a-meza - li _____ wa

ka-za-li _____ wa pa - ngo-ni

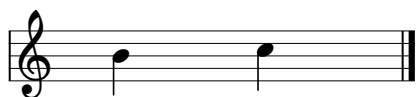
ngo-ni Be - tle_ he - mu pa - ngo-ni a-meza - li - wa Mko - mbozi we - tu kwe-li a-

1. me-za - li - wa, 2. me-za - li - wa.

- | | | |
|-------------------------|---------------------------------|--------------------------|
| 1. Kwe-li Mwo - ko - zi | a - me-za - li - wa, | a - me - ku - ja ku - |
| 2. M - to - to | Ye - su a - me-za - li - wa, | wo - te tu - sha - ngi - |
| 3. Vi - na - nda | vi - pi - gwe kwa u - fu - ndi, | ngo - ma ka - ya - mba |



1. tu - ko___ mbo - a, u - tumwa - nimwa she - ta - ni wo - te tu - ngi -
2. li - e kwa sha-ngwe, tu-pi-ge vi-ge - le - ge - le tu - i-mbe a - le -
3. pi - a fi - li - mbi, vyo-te pi - a vi - pi___ gwe ze - ze na ta - ru -



1. li - e.
2. lu - ya.
3. mbe - ta.