

NAJITOA KWAKO

MAXMILIAN L. BUKURU

Mt. Cecilia Mfia Dini

UDOM

06/06/2020

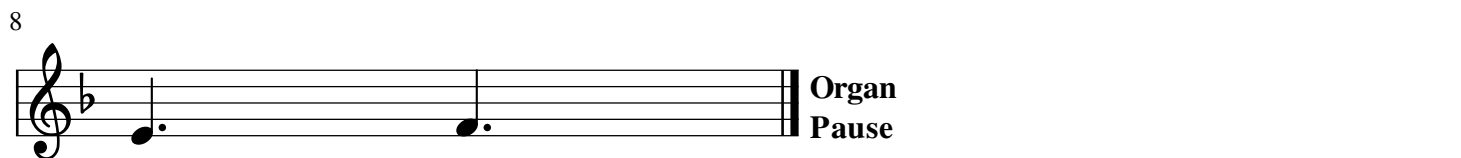
♩ = 55



Ni ki ku mbu ka na ni ki ta fa ka ri we ma



wa ko Bwana Mu ngu wa ngu mo yo wa ngu wa ja zwa fa



ra ja

9

KIITIKIO

Mu ngu wa ngu na ji to a kwa ko
U pe ke e cha nzo cha u zi ma

11

na li ne na Ne no la ko kwa wi mbo
m ti u za a o me ma u Ba ba

13

na pa za sa u ti ni ki ku si fu
Ma si hi u na ye le ta a ma ni

15

Mu ngu u li ye mwi ngi wa u ta ka ti fu.
mfa ri ji u tu pa ye fu

17

2.

ra ha ya kwe li

18

1. Ka ma ji nsi a li sha vyo nde ge wa ru ka o a ngani

22

ndi vyo a i li sha ya nguro ho na ku i shi bi shatha

25

ma ni.

MASHAIRI YANAYOFUATA.

**2. Huwatetea yatima, Huleta haki kwa wanyonge,
ndio maana watenda mema, watahimili uso wako.**

**3. Huiwasha taa yangu, kuliondoa giza langu,
Huileta ngao ya wokovu, yenye mapana na marefu.**

Dha mbi ni ki la ni li po a ngu ka

Hu ku si ta ku ni i nu a

Kwa sa la ni li po

ku kimbili a

Ha ra ka u li ni fi ki a

34

we ma wa ko ka tu ha u na mwisho ha ku na wa ku fa na

This musical system covers measures 34, 35, and 36. It features a grand staff with treble and bass clefs. The melody is primarily in the treble clef, with accompaniment in the bass clef. The lyrics are: "we ma wa ko ka tu ha u na mwisho ha ku na wa ku fa na".

37

ni shwa na we na ku tu ku za Ee Bwana wangu

This musical system covers measures 37, 38, and 39. It features a grand staff with treble and bass clefs. The melody is primarily in the treble clef, with accompaniment in the bass clef. The lyrics are: "ni shwa na we na ku tu ku za Ee Bwana wangu".

40

na zi i mba si fa za ko kuu.

This musical system covers measures 40, 41, and 42. It features a grand staff with treble and bass clefs. The melody is primarily in the treble clef, with accompaniment in the bass clef. The lyrics are: "na zi i mba si fa za ko kuu.". The system ends with a double bar line.