

Tazameni mikono yangu na miguu

Martin Mpendakula

♩ = 80

S
A

T
B

Ta za me ni mi ko no ya ngu na mi gu u ya ngu m

Detailed description: This block contains the first five measures of the song. It features a Soprano (S) and Alto (A) vocal line on a treble clef staff and a Tenor (T) and Bass (B) vocal line on a bass clef staff. The key signature is one sharp (F#) and the time signature is 2/4. The tempo is marked as quarter note = 80. The lyrics are: 'Ta za me ni mi ko no ya ngu na mi gu u ya ngu m'. There are repeat signs at the beginning and end of the first phrase.

6

1. 2.

ju e ya ku wa ni mi mi mwenye we ni mi mi mwe nye we ta za nye we ta za

Detailed description: This block contains measures 6 through 10. It features a Soprano (S) and Alto (A) vocal line on a treble clef staff and a Tenor (T) and Bass (B) vocal line on a bass clef staff. The key signature is one sharp (F#) and the time signature is 2/4. The lyrics are: 'ju e ya ku wa ni mi mi mwenye we ni mi mi mwe nye we ta za nye we ta za'. There are two first endings (1. and 2.) indicated by a double bar line and first/second endings symbols.

11

me ni mi ko no ya ngu hi i ta za - me ni ta za me ni mi gu u ya ngu hi i

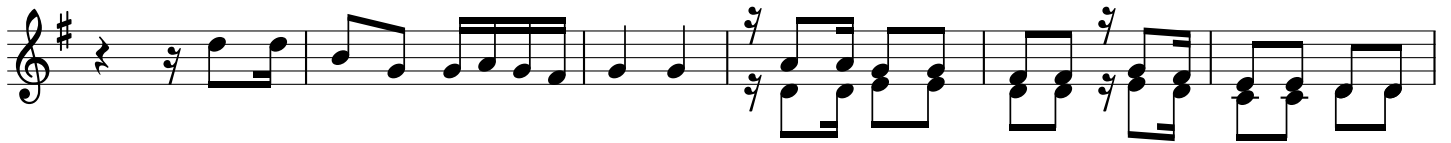
Detailed description: This block contains measures 11 through 16. It features a Soprano (S) and Alto (A) vocal line on a treble clef staff and a Tenor (T) and Bass (B) vocal line on a bass clef staff. The key signature is one sharp (F#) and the time signature is 2/4. The lyrics are: 'me ni mi ko no ya ngu hi i ta za - me ni ta za me ni mi gu u ya ngu hi i'. There are repeat signs at the beginning and end of the phrase.

17

ta za - me ni m ju e ya ku wa ni mi mi mwenye we ni mi mi mwe nye we

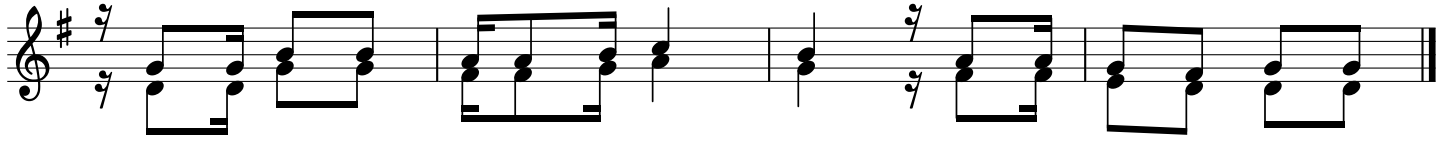
Detailed description: This block contains measures 17 through 21. It features a Soprano (S) and Alto (A) vocal line on a treble clef staff and a Tenor (T) and Bass (B) vocal line on a bass clef staff. The key signature is one sharp (F#) and the time signature is 2/4. The lyrics are: 'ta za - me ni m ju e ya ku wa ni mi mi mwenye we ni mi mi mwe nye we'. There are repeat signs at the beginning and end of the phrase.

23



1.Bwana Ye su a li wa to ke a wa na fu nzi wa ke a ka wa a mbi a
 2.Na o wa ki wa ha wa a mi ni ya kuwa ni ye ye a ka wa a mbi a

29



kwa ni ni m na fa dha i ka m na o na sha ka
 ta za me ni mi ko no ya ngu na mi gu u ya ngu