

NANI ATAKAA KATIKA HEMA YA BWANA

Kat. Japhet John ngonyani

23.08.2015

Dar es salaam.

Adagio

mf

ff

Bwa-na ni na-ni a-ta-ka-ye-ka-a ka-ti-ka he-ma ya-ko? Bwa-na ni na-ni a-ta-

8

1. Bwa-na ni na-ni a-ta-ka-ye
ka-ye ka-a ka-ti-ka he-ma ya-ko. ya-ko. Bwa-na ni na-ni, a-ta-ka-ye

15

ka-a, Ni na-ni,
1. Bwa-na 2.
ka-a, ka-ti-ka he-ma, ka-ti-ka he-ma ya-ko. ya-ko.

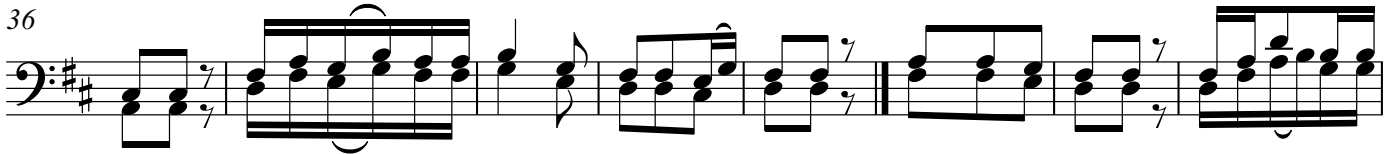
21

1. Ni m-tu yu-le, a-e-nda-e kwa u-ka-mi-li-fu na ku-te-nda ha-ki, a-se-ma ye u-kwe-li

29

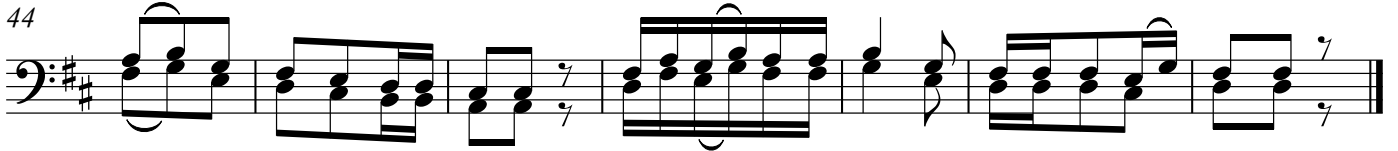
kwa mo-yo wa-ke. 2. Ni ye-ye a-mba-ye, ha-ku-m-te-nda mwe-nzi-we, ha-ku-m-te-nda u

36



ba-ya, wa-la ha-ku-m-se-nge-nya ji-ra-ni ya-ke. 3.Ma - cho-ni pa-ke, m-tu a__si-ye

44



fa__ a hu-dha-ra-u - li-wa, ba-li hu_wa-he-shi - mu wa-m-cha-o Bwa-na.