

Utuombe Mama Maria

$\text{♩} = 44$

Musical notation for the first system, measures 1-4. The key signature is three sharps (F#, C#, G#) and the time signature is 4/4. The melody is written in the treble clef and the bass line in the bass clef. Lyrics are placed below the notes.

Sa la mu Ma ri a u me ja a ne e ma

ma

Musical notation for the second system, measures 5-7. The key signature is three sharps (F#, C#, G#) and the time signature is 4/4. The melody is written in the treble clef and the bass line in the bass clef. Lyrics are placed below the notes.

Bwa na yu na we u me ba ri ki wa ku
U tu o mbe e kwa mwa na o Bwa na Ye su

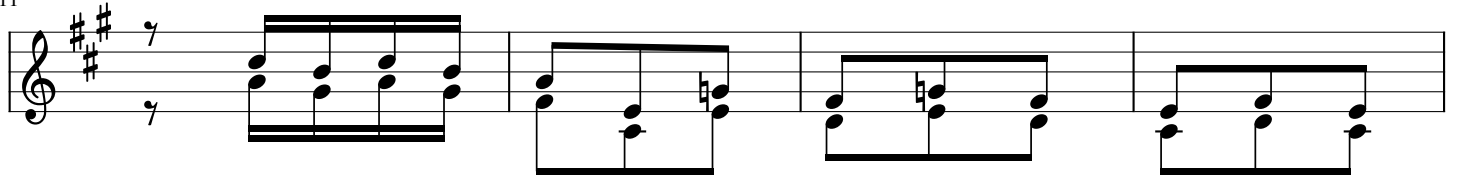
ma

Musical notation for the third system, measures 8-11. The key signature is three sharps (F#, C#, G#) and the time signature is 4/4. The melody is written in the treble clef and the bass line in the bass clef. Lyrics are placed below the notes. The system includes first and second endings.

li ko wa na wa ke wo te
Kri stu si si wa ko se fu

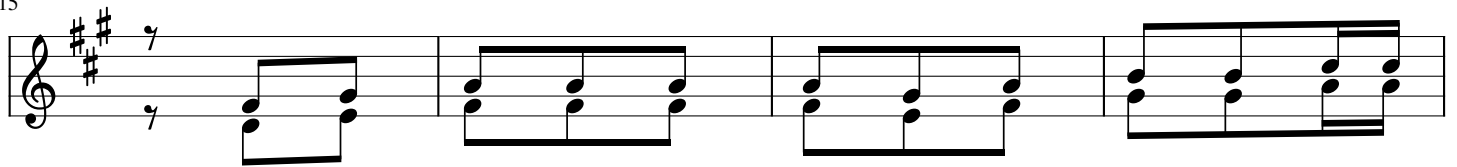
ma

11



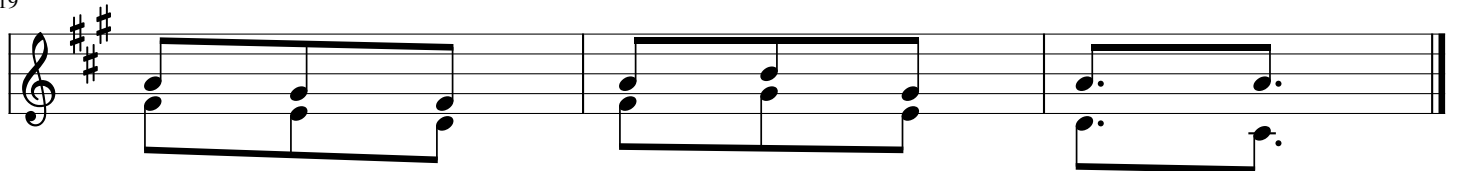
1. Tu na ki mbi li a u li nzi wa ko Ma ma
 2. Tu na ku li li a Ma ma mwe nye hu ru ma
 3. U tu sa i di e Ma ma ye tu Ma ri a
 4. E we Ma ma Ma ri a tu ma i ni le tu

15



we we ndi we ki mbi li o le tu tu o
 ki mbi li o la wa ko se fu tu na
 u si tu nyi me msa a da wa ko tu i
 si ki li za ma o mbi ye tu u tu

19



mbe e kwa mwa na o Ye su
 ji nye nye ke za kwa ko
 ngi a po ha ta ri ni
 o mbe e kwa mwa na o