

# BABA ASKOFU WETU

Fr. Gregory Kayetta

Musical notation for the first system, featuring a treble and bass clef in 3/4 time. The lyrics are: Ba - ba A - sko - fu we - tu ni wa - ki - li wa - ke Ba - ba A - sko - fu

Musical notation for the second system, featuring a treble and bass clef in 3/4 time. The lyrics are: Mu - ngu, a - me - te - u - li - wa na Mu - ngu we - tu Ba - ni ba - A - sko - fu we - tu ni wa - ki - li wa - ke Mu - ngu,

Musical notation for the third system, featuring a treble and bass clef in 3/4 time. The lyrics are: ku - chu - nga ko - ndo - o wa - ke ni - wa - ki - li wa - ke Mu - ngu a - me - te - u - li - wa na Mu - ngu Ba - ba A - sko - fu we - tu

Musical notation for the fourth system, featuring a treble and bass clef in 3/4 time. The lyrics are: Ee Bwa - na um - ja - ze ba - ra - ka

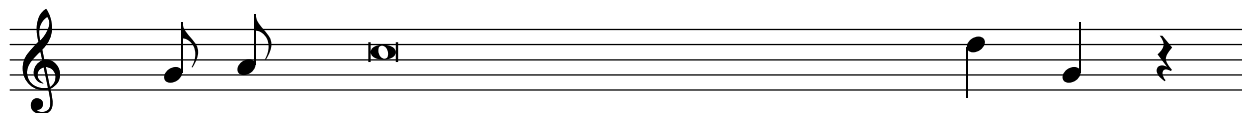
Ba - ba Mu - ngu twa - ku - o - mba Ba - ba Mu-ngu

twa - ku - o - mba; Ba - ba As - ko-fu we - tu u-mpe ba - ra -

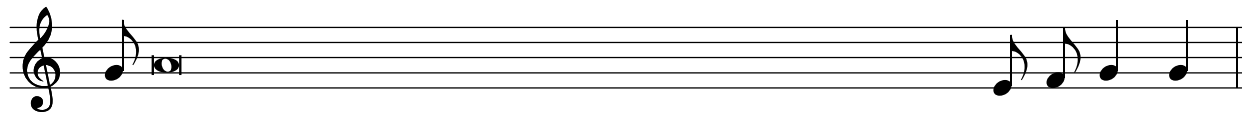
ka. Ba-ba Mu-ngu twa-ku - o - mba um-ba - ri - ki As - ko - fu,

Ba-ba Mu-ngu ri - ki As-sko-fu we - tu, u - li - ye - mte -

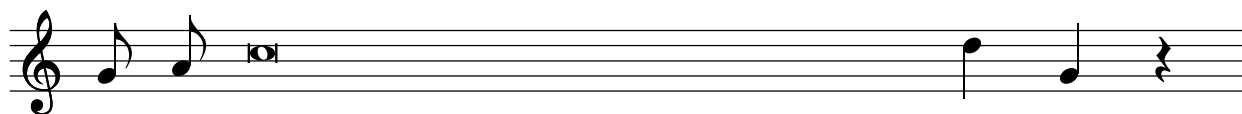
u - a ku - wa wa - ki - li wa - ko.



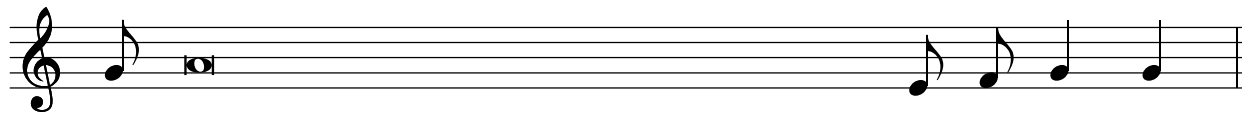
1. Hu - yu ndiye kuhani mkuu aliyempendeza Bwa - na/



1. Ha-ku-patikana aliye sawa naye kwa kushika sheria za yeye a - li - ye ju - u



2. A - tu kuzwe Baba na Mwana na Roho Mtaka - ti - fu



2. Ka - ma Mwanzo na sasa na siku zote na mile - le A - mi - na