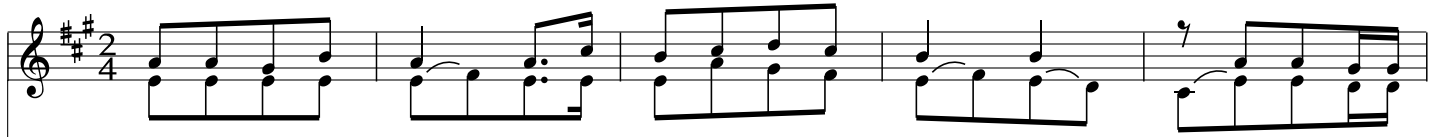


Nitakipokea kikombe cha wokovu

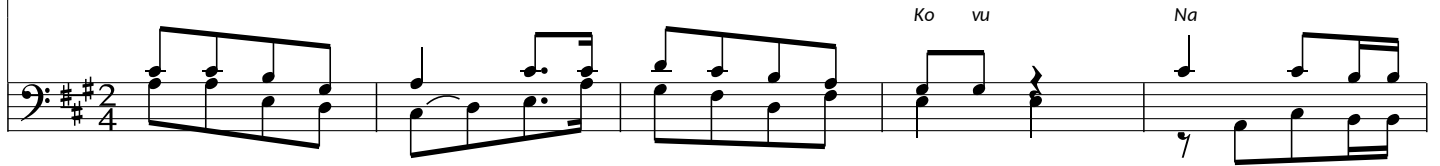
Zab.116:12-13,15-18(K)13

Fabian Joseph Joga

♩ = 69



Ni ta ki po ke a ki ko mbe cha wo ko vu na ku li ta

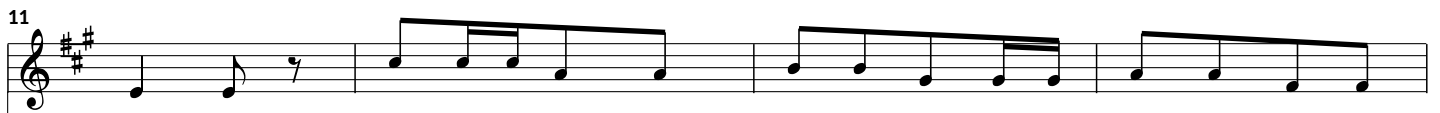
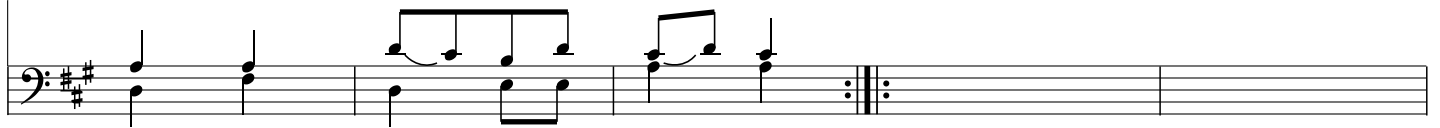


Ko vu Na

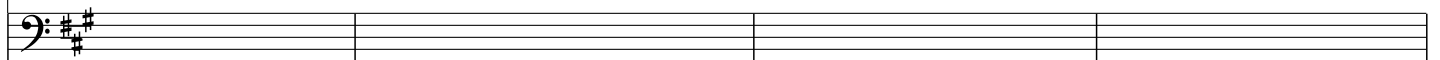


nga - za ji - na la Bwa na

- 1. Ni m ru di shi e Bwa na
- .Ni ta ki po ke - a ki
- 2. I na tha ma ni ma cho nipa
- .Ee Bwa na ha kika mimi ni mtu
- 3. Ni ta ku to le - a dha
- .Ni ta zi o ndo a na dhiri



ni ni kwa u ka ri mu wa ke wo te a li o ni te
 ko mbe cha wo ko vu na ku li ta - nga za ji na
 Bwa na ma u - ti ya wa cha Mu ngu ya wa cha Mu ngu
 mi shi ni m tu mi shi wa ko u me vi fu ngu a vi
 bi hu dha bi hu ya ku ku shu ku ru na kuli tanga zaji nala
 za ngu na dhi ri za ngukwa Bwa na Na a m mbe le ya watu



15

Musical notation for the first staff. It begins with a treble clef and a key signature of two sharps (F# and C#). The melody consists of several notes: a quarter note on G4, a quarter note on A4, a quarter note on B4, a quarter note on C5, a quarter note on B4, a quarter note on A4, and a quarter note on G4. This is followed by a repeat sign with two endings. The first ending is a quarter note on G4, and the second ending is a quarter note on A4.

nde a? la - Bwa na.
wa ke, fu ngo vya ngu.
Bwa na, wa ke wo te.

Musical notation for the second staff. It begins with a bass clef and a key signature of two sharps (F# and C#). The staff is mostly empty, with a repeat sign and first and second endings indicated by boxes labeled '1' and '2' above the staff.