

HONGERA KWA KUFUNGA NDOA

o 763 113 728

By D.O.Nducha
2024

♩=68

Kwa Upendo



1. U me m pa - ta mwenz a wa ko, a m bay e M un gu ka - k u cha gu li a;
2. U ka m pe - nde M - ke o, u ka m tu n ze na - ku mu he shimu;
3. Ka ti kama - i sha ya N do a, ku na - changa mo - to nyingi sa na;



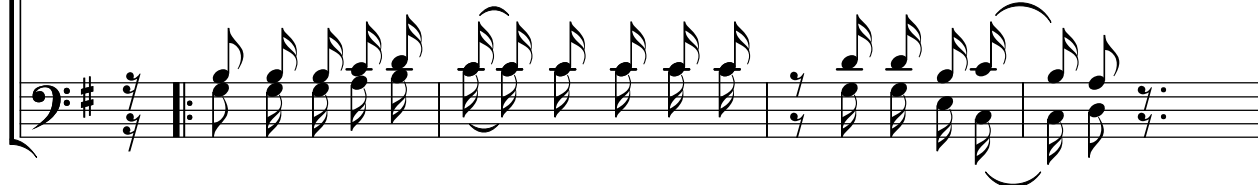
m we nde m ka i shi kwa u pe ndo m ki m tu ku za Mu ngu.
i li ku su di M we nye zi Mu ngu a si ma me ka ti ye nu.
hi vyo mwo - m be ni Mu ngu we nu a zi pi ti shi e m ba li.

KIITIKIO

Ho nge ra Ga spal ho nge ra sa - na;



Ho nge ra ka ka Ga - spal, Ho nge ra, ho nge ra sa - na, u me



ti mi - za



ti mi za, ye le le, u me ti mi za a - ga no la N do a; Ho ho nge ra.



HITIMISHO
CODA

Ho - - ngera Ki ja na we - tu, He shi ma u me tu pa ti a, Wa za zi wako,

Wa za zi wa ko Ho nge ra, ho nge ra, ho nge ra sa - na, Ho

8
A i ye i ye Ki ja na we tu, ho - - nge ra,
A - ku e pu shi - e mba li, na vi sha wi shi,
Wa za zi wa ko Ho nge ra, ho nge ra, ho nge ra sa - na, Ho

1.
nge ra, ho nge ra, ho nge ra sa - na, Ho
8
Tu na ku o mbe a kwa ke yo Ba - ba Mu ngu Mwe nye zi;
U - m ta za me hu yo
nge ra, ho nge ra, ho nge ra sa na, Ho

[Rall]

The image shows a musical score for a song. It consists of three staves: a vocal line, a piano accompaniment line, and a bass line. The key signature is one sharp (F#). The tempo/mood is marked as [Rall]. The lyrics are: "nge ra; ka ti ka ma i sha ya ko. tu. nge ra; ka ti ka ma - i sha ya ko." The score includes a first ending bracket over the first two measures of the vocal line, marked with a '2.' above it. The piano accompaniment and bass line provide harmonic support for the vocal melody.

Rallentando[Rall]-Punguza mwendo

*Typed by D O.Nducha
0 763 113 728*