

Bwana Ni Nuru Yangu

Davis Ndaba
B.M. Hospital
Dom Tz
06/06/2024

$\text{♩} = 72$

Musical notation for the first system, measures 1-4. The piece is in 2/4 time with a key signature of one flat (Bb). The melody is in the treble clef, and the accompaniment is in the bass clef. The lyrics are: Bwa na ni nu ru ya ngu na wo ko vu.

Musical notation for the second system, measures 5-8. The piece continues in 2/4 time with a key signature of one flat. The melody is in the treble clef, and the accompaniment is in the bass clef. The lyrics are: wa ngu na wo ko vu wa ngu wa ngu ni mwo go pe. There are first and second endings indicated by '1.' and '2.' above the staff.

Musical notation for the third system, measures 9-13. The piece continues in 2/4 time with a key signature of one flat. The melody is in the treble clef, and the accompaniment is in the bass clef. The lyrics are: na ni Bwa na ni ngo me. There is a fermata over the word 'Bwa' in measure 11.

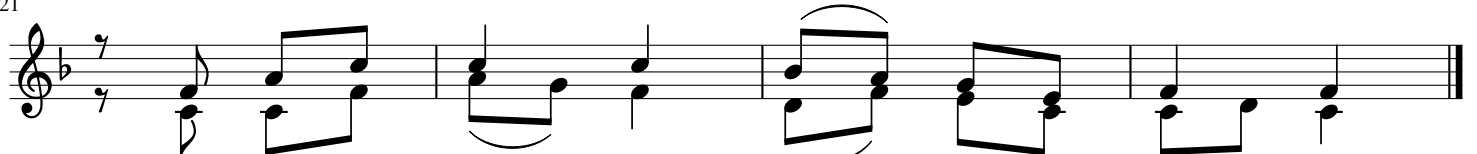
Musical notation for the fourth system, measures 14-17. The piece continues in 2/4 time with a key signature of one flat. The melody is in the treble clef, and the accompaniment is in the bass clef. The lyrics are: ya ngu na u zi ma wa ngu. The system ends with a double bar line and repeat dots.

17



1. Wa - te si wa ngu na a du i za ngu
 2. Je - shi li ja po ku pi ga na na mi
 3. Ne no mo ja ni me li ta ka kwa Bwa na

21



wa li ji kwa a wa - ka a ngu ka
 mo yo wa ngu - ha u ta o go pa
 na lo ndi lo ni ta ka lo lita fu ta

copied by Davis Ndaba
 06/06/2024
 0766473762