

ASANTE BWANA YESU

*Frt. Emmanuel Massaawe,
Ntungamo Major Seminary,
May, 2024.*

$\text{♩} = 70$

S
A

1. Bwana Ye su tu na ku shu ku ru ku - tu li sha na ku tu -

T
B

8

nywe sha, mwi li wa ko damuya ko Bwa na, vi - tu pa ti - e u

16

zi **KIITIKIO** ma.

17

A sa nte Bwa - na Ye su, ku - tu pa ti a u zi ma,

25

tu ja li e u ta ka ti fu, si ku mo ja tu fi ke kwako. kwako.

34

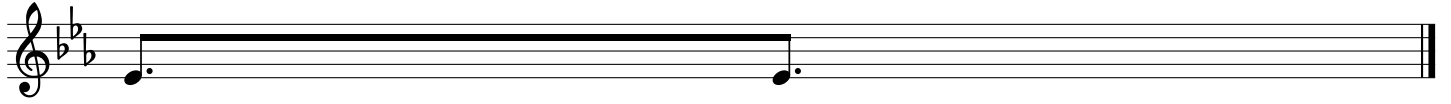
2. Uli tu u mba kwa m fa no wa ko, u ka tuko mbo a, kwa - da mu
3. Me ma me ngi u na tu ja li a, ha - ta ya le tu si yo sta

41



ya ko, ka a na si ka a na si Bwa na, ka a na si mi - le le
hi li, na ne e ma u na tu pa ti a, tu m shi nde mu o vu she

49



yo te.
ta ni.

KIBWAGIZO

50



A sa nte Bwa na Ye su, - A sa nte tu nashu ku ru, -

58



- A sa nte Bwa na Ye su - A sa nte tu na shu ku ru A

66

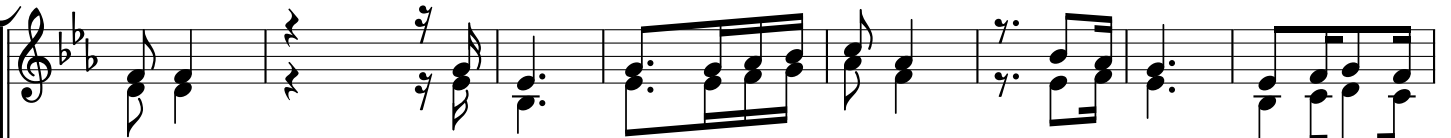


A sa nte Bwa na Ye su, A sa nte tu nashu

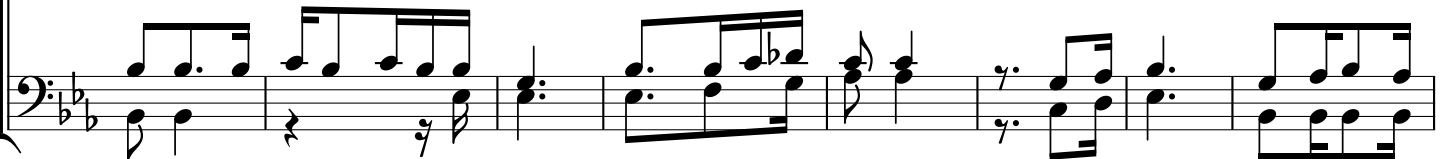


sa nte Bwa na Tu na se ma

73



ku ru, ha tu na cha ku ku li pa, tu n se ma a sa nte



A sa nte sa na

1. sa na

2. sa na.

A

Detailed description: The image shows a musical score for two staves, likely piano accompaniment. The top staff is in treble clef and the bottom staff is in bass clef. Both staves have a key signature of two flats (B-flat and E-flat). The music is divided into two measures by a double bar line. The first measure is marked with a first ending bracket (1.) and contains two chords: a triad of G2, B-flat2, and D3 in the bass staff, and a dyad of G4 and B-flat4 in the treble staff. The second measure is marked with a second ending bracket (2.) and contains two chords: a dyad of G4 and B-flat4 in the treble staff, and a dyad of G2 and B-flat2 in the bass staff. There are rests in the treble staff of the first measure and a quarter note G3 in the bass staff of the second measure. The lyrics 'sa na' are written below the first measure, and 'sa na.' are written below the second measure. A section marker 'A' is centered below the second measure.