

KARIBU YESU

By Innocent Kiluwulo.

♩ = 100

S
A

T
B

Ka ri bu Ye sumwo ko zi uwe nda ni yanguda i ma u i shi na mi Bwa na

Detailed description: This block contains the first system of music for Soprano (S) and Alto (A) voices. The music is in 3/4 time with a tempo of 100. The key signature has three sharps (F#, C#, G#). The vocal lines are written in treble clef. The lyrics are: "Ka ri bu Ye sumwo ko zi uwe nda ni yanguda i ma u i shi na mi Bwa na".

8

1. 2.

wa ngu mi le le ka le le mwi li wa ko ni cha ku la u ni shi bi

Detailed description: This block contains the second system of music for Soprano (S) and Alto (A) voices, starting at measure 8. It features two first endings (1. and 2.) for the vocal lines. The lyrics are: "wa ngu mi le le ka le le mwi li wa ko ni cha ku la u ni shi bi".

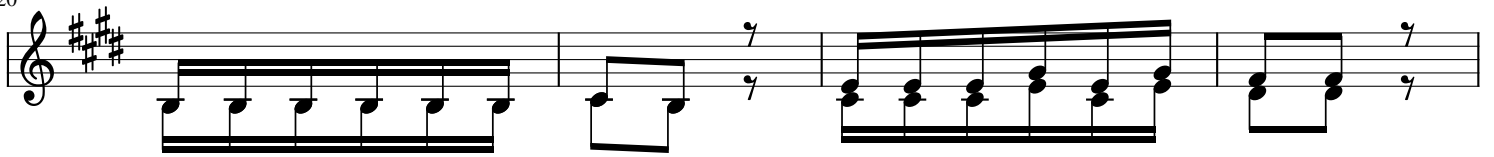
14

1. 2.

she da mu ya ko ni ki nywa ji cha ro ho mwi li ho.

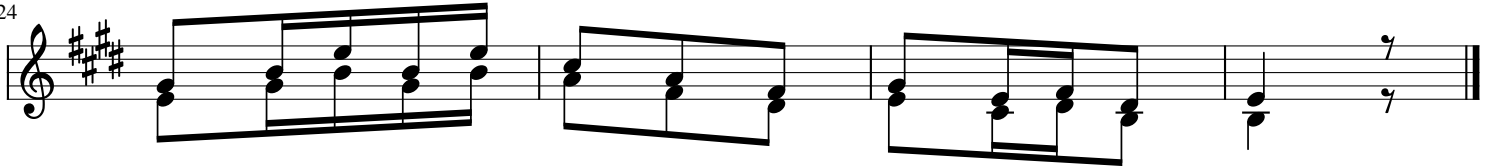
Detailed description: This block contains the third system of music for Soprano (S) and Alto (A) voices, starting at measure 14. It features two first endings (1. and 2.) for the vocal lines. The lyrics are: "she da mu ya ko ni ki nywa ji cha ro ho mwi li ho.".

20



1. Bwa na Ye su a li se ma a u la ye mwi li wa ngu
 2. Bwa na Ye su a li se ma a ni a mi ni ye mi mi
 3. Twende me za ni kwa Bwa na tu ka le mwi li wa Bwa na

24



ha ta o na nja a ka mwe a se ma Bwa na.
 na ku shi ka ni se ma yo ni ta mfu fu a.
 na ku i nywa da mu ya ke tu o ko le we.