

BWANA NDIYE MCHUNGAJI WANGU

Zab:23

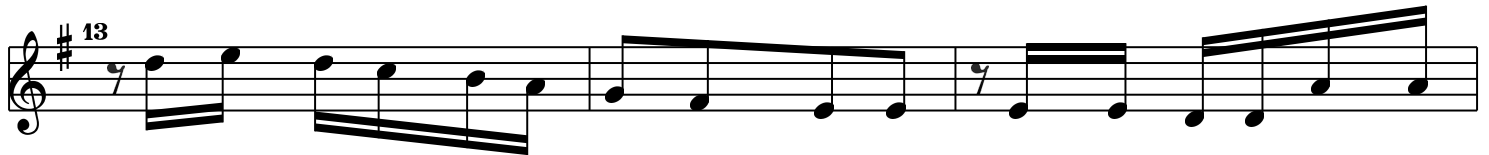
Silvester N Mdumla
Kigango Cha Mtumba Ihumwa

Musical notation for the first system, including treble and bass staves. The tempo is marked as $\text{♩} = 70$. The key signature is one sharp (F#) and the time signature is 2/4. The lyrics are: Bwa na ndi ye m chu ngs ji wa ngu si ta pu ngu ki wa na ki tu

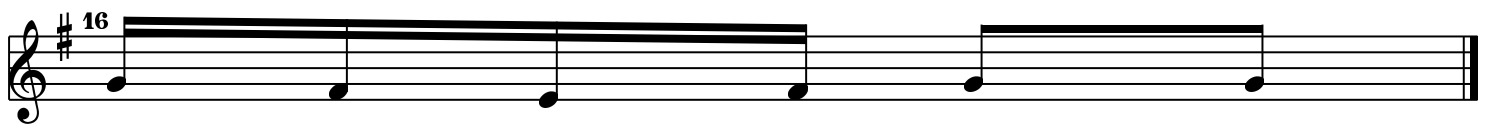
Musical notation for the second system, including treble and bass staves. The tempo is marked as $\text{♩} = 5$. The key signature is one sharp (F#) and the time signature is 2/4. The lyrics are: si ta pu ngu ki wa na ki tu si ta pu ngu ki wa na ki tu



1. (a) Ka ti ka ma li sho ya ma ja ni ma bi chi hu ni la za
 (b) Na mi ni ta ka a nyu - mba ni nyu mba nimwa Bwa nami le le
2. (a) Na - a m ni ja po - pi ta kati ka bonde la u vu li
 (b) Go ngo la ko na fi mbo - ya ko vyani fa riji wa a nda a
3. (a) U me ni pa ka ma - - fu ta ki chwa niki chwa ni pa ngu
 (b) Ha. ki ka we ma na fa - dhi li zita ni fua ta siku zo te



ka ndo ya ma ji ya u tu li vu ya u tu - li vu
 hu ni o ngo za ka ti ka nji a za ha ki - kwa -
 wa ma u ti si ta ogo pama ba ya kwa ma a na we u
 me za mbe le ya - ngu ma cho ni pa wa te - si wa
 na ki ko mbe cha ngu ki nafu ri ka ki ki mbe cha -
 za ma i sha ya ngu nami nita ka a nyu mba ni - mwa -



hu - ni o ngo za
 ji - na - la ke
 po pa mo ja na mi
 wa - te si wa ngu
 ngu ki na fu ri ka
 Bwa - na mi le le.