

# MACHO YETU HUMWELEKEA

Zab: 123: 1 - 4

Philemon Kajomola {phika}

Kilombero Parish

27.06.2024

Andante

♩ = 72

Ma cho ye tu— humwe le ke a Bwa na Mu ngu we tu Ha— ta— ha

7  
ta A ta— ka— po tu re he - mu.  
A— ta— ka - po tu re he - mu

11  
1. Nime ku i nu li— a ma— cho yangu we we u ke— ti ye mbi— ngu ni

19  
ka ma vi le ma cho ya wa tu mi shi kwam ko no wa Bwa na za o.

25  
2. Ka mama cho ya— m ja ka— zi wako kwam ko nowa bi bi ya— ke machoye tu

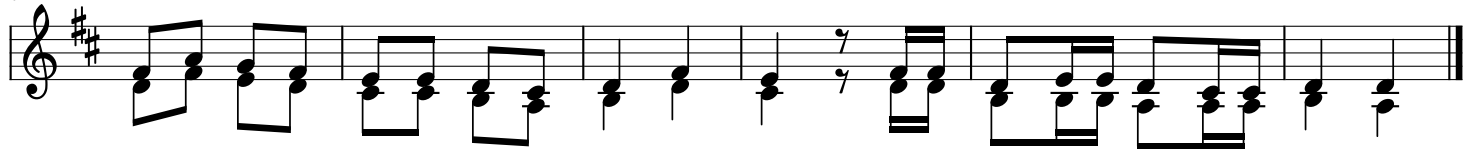
34  
humwe le ke a Bwa na Mu ngu we tu ha ta a ta ka po tu re he mu.

39



3. U tu re he mu Ee\_\_\_\_\_ Bwa\_\_\_\_\_ na kwama a na tume shi ba dha\_ ra u

47



Na fsi ze tu zi me shi ba m za ha nadha ra u za we nye ki bu ri.