

# ULALE SALAMA

(Wimbo wa msiba)

Na Stephen Kagama

Nyasubi Kahama

$\text{♩} = 65$

Imba kwa hisia kali....!

S  
A

T  
B

Tu na m shu ku ru Mu ngu kwa za wa di ya ma i sha ya ko

kwa za wa di ya ma

Detailed description: This block contains the first four measures of the song. It features two vocal parts, Soprano (S) and Alto (A), and two piano parts, Tenor (T) and Bass (B). The music is in 2/4 time with a key signature of three sharps (F#, C#, G#). The lyrics are: 'Tu na m shu ku ru Mu ngu kwa za wa di ya ma i sha ya ko' for the vocal parts and 'kwa za wa di ya ma' for the piano parts.

5

ndu gu ye tu m pe ndwa sa na u

Detailed description: This block contains measures 5 through 8. The lyrics are: 'ndu gu ye tu m pe ndwa sa na u'. The musical notation continues with the same instrumental accompaniment.

7

la le sa la ma.

Detailed description: This block contains the final two measures of the song. The lyrics are: 'la le sa la ma.'. The music concludes with a double bar line and repeat dots.

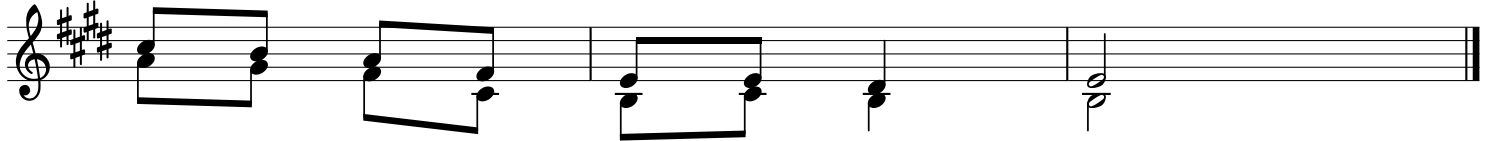
MABETI (SOP & ALTO)

9



1.Vi ta u me vi pi ga mwendo u me u ma li za u la le  
2.Ni ka zi ya ke Bwa na tu na shu ku ru kwa yo te u la le  
3.Twaku o mbe a kwa Mu ngu pu m zi ko la a ma ni u la le

14



sa - la ma ndu gu ye tu.  
sa - la ma ndu gu ye tu.  
sa - la ma ndu gu ye tu.