

# UPOKEE NI SHUKRANI YANGU

## sadaka

BY STANSLAUS KHANTU

Mudida-Singida

0678594926

7/1/2024

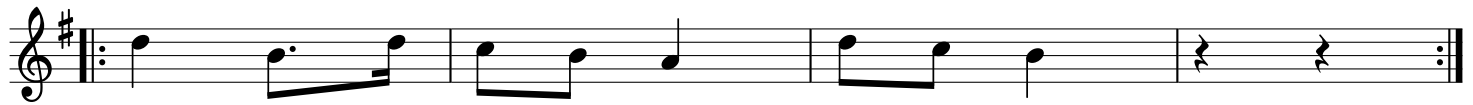
Musical score for the first system of the song. It consists of two staves: a treble clef staff and a bass clef staff. The key signature is one sharp (F#) and the time signature is 2/4. The melody is written in the treble clef, and the accompaniment is in the bass clef. The lyrics are written below the treble staff.

Sa da ka ya ngu na i le ta kwa ko,  
U i po ke e ni shu kra ni ya ngu,  
Twe nde ni tu ka to e  
Po ke a Ba baMu ngu

Bwa na

Musical score for the second system of the song. It consists of two staves: a treble clef staff and a bass clef staff. The key signature is one sharp (F#) and the time signature is 2/4. The melody is written in the treble clef, and the accompaniment is in the bass clef. The lyrics are written below the treble staff.

7  
kwa mo yo sa fi.  
u i ba ri ki.



1. Ka ltu lja li - a ne e ma,  
Ma za o ma sha mba ye - tu.
2. Tu mru di shi<sup>2</sup>. - e shu kra ni,  
A na sta hi - li mu - mba.
3. A 3. fya - nje - ma ka tu pa,  
Ma pa ji yo - te ka tu pa.

