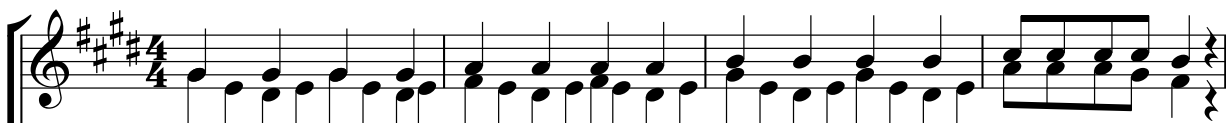


# MUNGU UNIREHEMU

Hendry Polycarp Kimario  
Arusha - February 2018

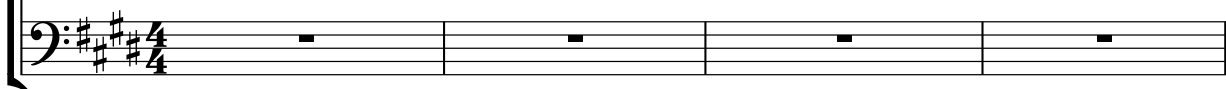
## Mashairi

SOPRANO  
ALTO



1.Ni na o\_mba to\_ba Bwana kwa ni\_m\_i\_m\_i ni me ko\_s\_a,  
2.Kwa ma ne no kwa ma te ndo na ku to ti mi za wa ji bu,  
3.U o ngo u cho nga ni shi na ku to m ja li ji ra ni,  
4.Ni na o mba nee ma ya ko ni vi shi nde vi sha wi shi,

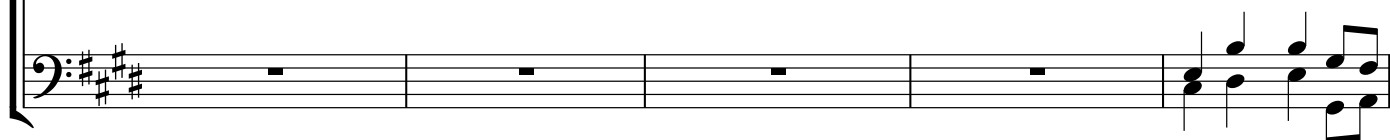
TENOR  
BASS



5

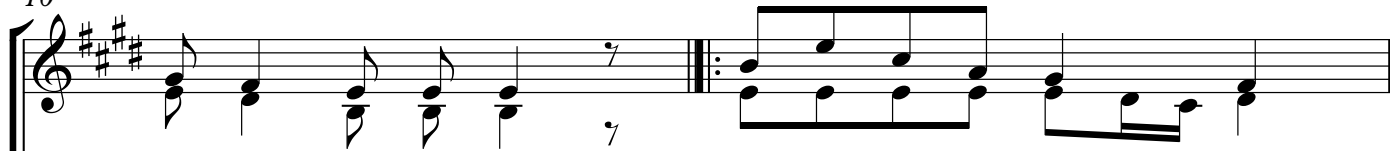


E Mu ngu u si ni hu ku mu, Ee Mu ngu u ni sa\_me he\_ O\_R G\_

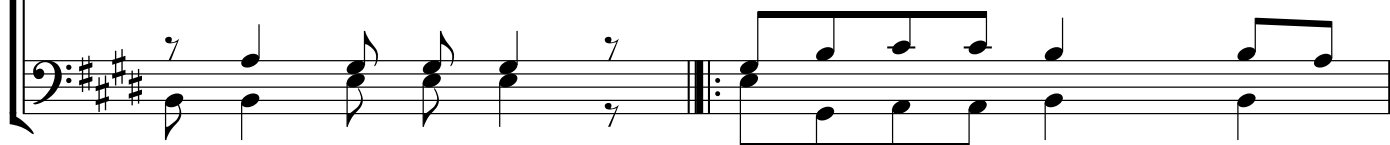


10

## KIITIKIO



A\_ N Ni na ru di kwa\_ ko,



12

ni ki o mba to ba, Ee Mu ngu u ni re he mu.

The image shows a musical score for two staves. The top staff is in treble clef and the bottom staff is in bass clef. Both staves are in the key of D major (indicated by two sharps: F# and C#). The music consists of a series of chords and single notes. The lyrics are written below the top staff. The piece ends with a double bar line and repeat dots.