

NDOA TAKATIFU YAPENDEZA

Pastory R. Mveke

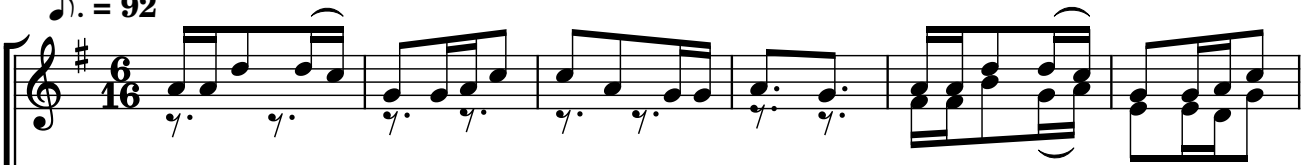
Dar es Salaam

27/05/2010

Melody ya kisukuma

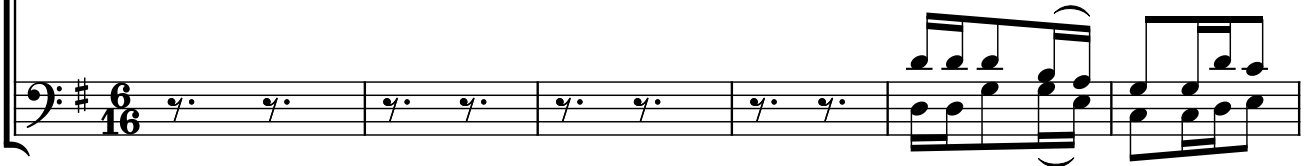
♩. = 92

S
A



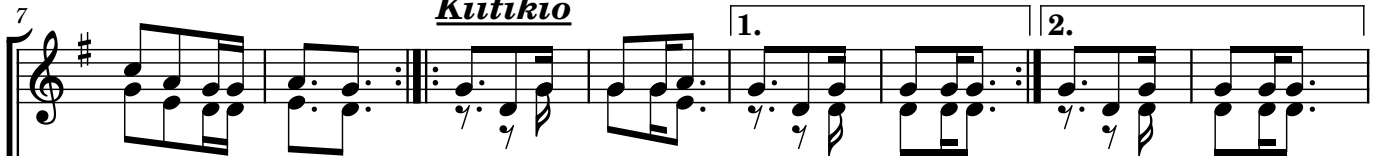
1. (a) Wanando a ha wawame ti mi za a ga no, wa na ndo a ha wawa me
(b) Ku i shi wa__ wi li ni a gi zo la__ Mu ngu, ku i shi wa__ wi li ni a
2. (a) Wame u nga__ ni ka na ku wa mwi li m mo ja, wame u nga_ ni kana ku
(b) Ni ki fo pe__ ke e ndicho ki ta wa__ te nga, ni ki fo pe__ ke e ndi cho
3. (a) Ba ra ka na__ pi a fa na ka twa wa o mbe a, ba ra ka na__ pi a fa na
(b) Mungua wa ja li e u pe ndo na a__ ma ni, Mungua wa ja li e u pe

T
B



Kiitikio

7



ti mi za a ga no
gi zo la__ Mu ngu

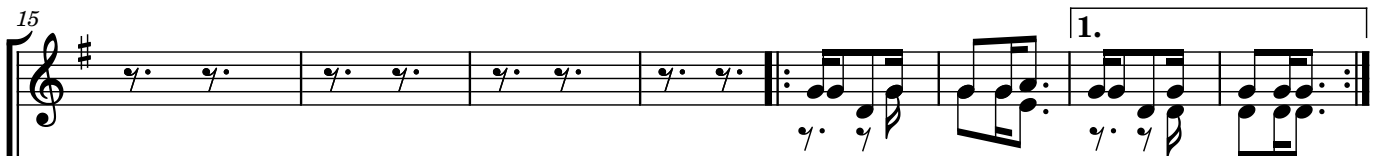
wamwi lim mo ja Ndo a ta ka ti fu kwe li ya pe ndeza
ki ta wa__ te nga kwe tu wa na damu

pi a kwa Mungu juu.Kwa

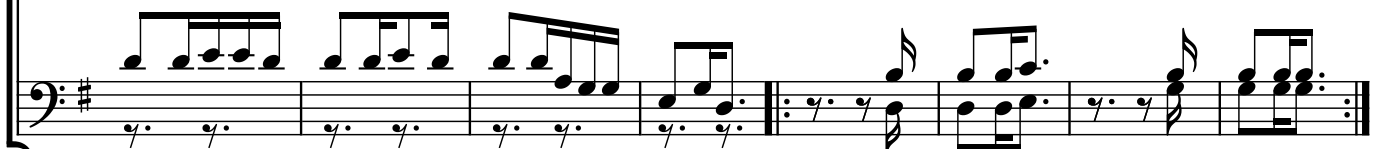
ka twawao mbe a
ndo na a__ ma ni



15



shangwekuu tu fu ra hi tu pi genavige le ge le tucheze kwa fu ra ha tuimbekwa ki kwe tu
kwa ze ze na kwangoma



23 2.

ma ri mba na fi li mbi

The image shows a musical score for two staves. The top staff is in treble clef and the bottom staff is in bass clef. Both staves have a key signature of one sharp (F#). The music consists of two measures. The first measure contains a quarter note G4, a quarter note A4, and a quarter note B4. The second measure contains a quarter note C5, a quarter note B4, and a quarter note A4. The lyrics 'ma ri mba na fi li mbi' are written below the notes. The number '23' is written above the first measure, and '2.' is written above the second measure. The score ends with a double bar line.