

# NIMEKUJA KUYAFANYA MAPENZI YAKO:

By; Mesoba



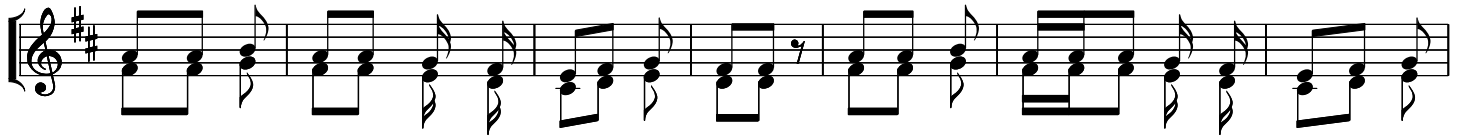
Ndi po ni li po se ma ta za ma ni me ku ja, ndi po ni li po se ma ta



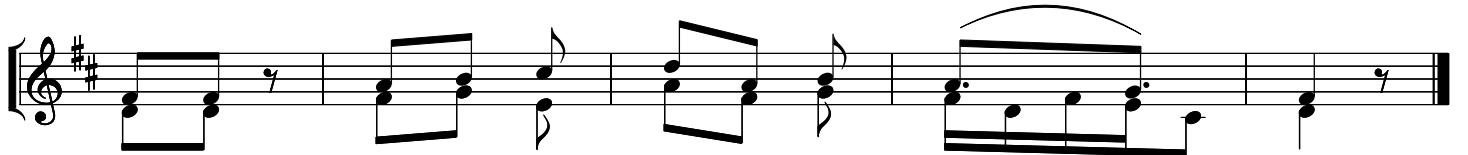
za ma ni me ku ja Ee Bwa na ni me ku ja ku ya fa nya ma pe nzi



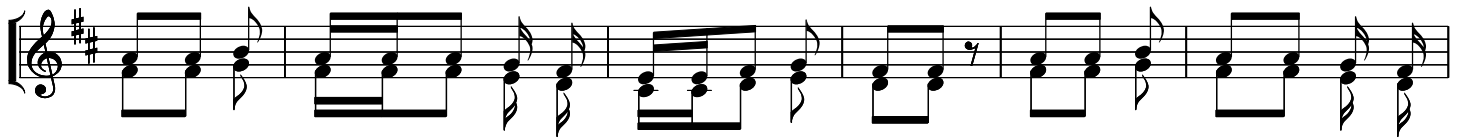
ya ko Bwa na ma pe nzi ya ma ko.



1. Ni me ku ja Ee Bwa na u ni po ke e, ni me ku ja ku ya fa nya ma pe nzi



ya ko, ma pe nzi ya ko Ee Bwa na.



2. Ka ti ka go mbo la chu o ni me a ndi ki wa ku ya fa nya ma pe nzi



ya ko Ee Bwa na ma pe nzi ya ko Ee Bwa na.