

SALAMU MAMA MARIA

RAPHAEL MICHAEL

03.10.2024

KIGOMA

♩ = 63

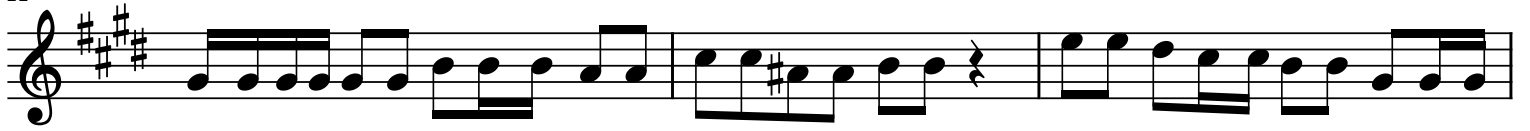
Musical score for the first system of 'Salamu Mama Maria'. It features a treble and bass clef with a key signature of three sharps (F#, C#, G#) and a 4/4 time signature. The tempo is marked as ♩ = 63. The lyrics are: Sa - la - mu - mama Ma - ri a tu na ku sa li mu sala mu Ma - ri a - mama wa - Mu ngu (mama) u me ba ri ki wa ku li ko.

Musical score for the second system of 'Salamu Mama Maria'. It features a treble and bass clef with a key signature of three sharps (F#, C#, G#) and a 4/4 time signature. The lyrics are: ma - ma Ma ri a wa na wa ke wo - te. The system includes first and second endings.

Musical score for the third system of 'Salamu Mama Maria'. It features a treble clef with a key signature of three sharps (F#, C#, G#) and a 4/4 time signature. The lyrics are: 1. Sa la mu Ma ri a u me ja a nee ma Bwa na yu na we u me.

Musical score for the fourth system of 'Salamu Mama Maria'. It features a treble clef with a key signature of three sharps (F#, C#, G#) and a 4/4 time signature. The lyrics are: ba ri ki wa ku li ko wa na wa ke wo te.

11



2.NaYe sumza o wa tumbola ko a meba ri ki wa Ma ri a Mtakati fu Mamawa

14



Mu ngu u tu o mbe e si si wa ko se fu