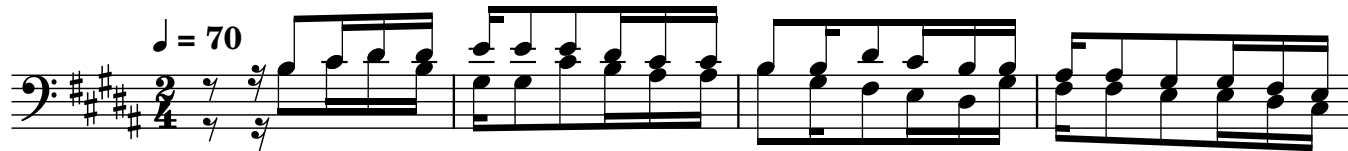


Mungu Mpangaji

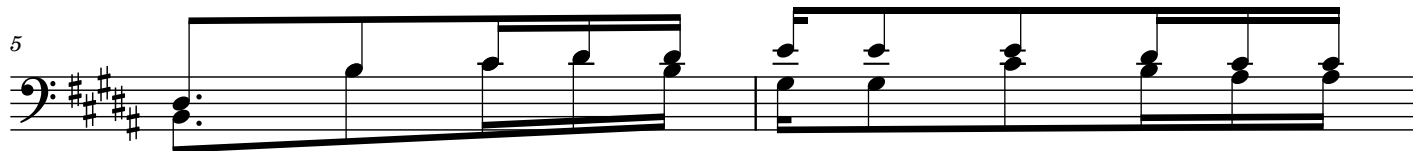
Tafakari

SPC, Kimwenza, Kin, RDC

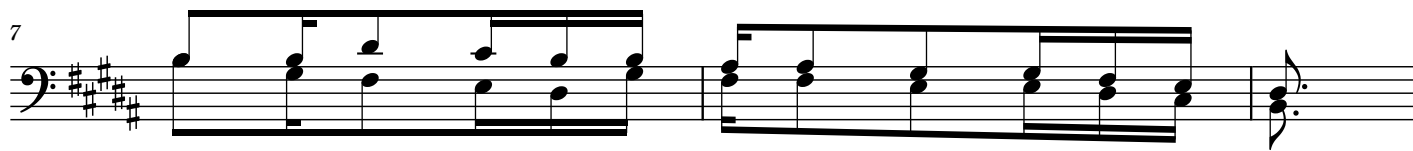
Eric Mwaniki FRANCIS, S.J



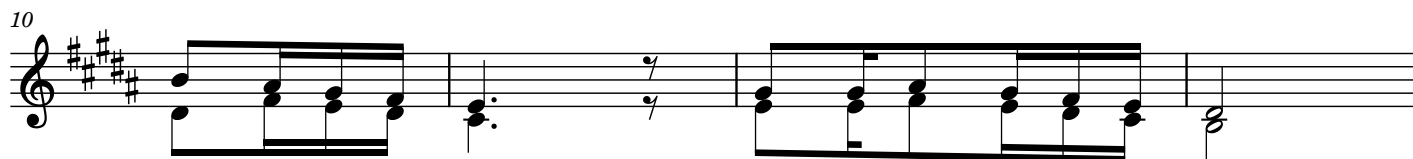
1. Bi-na-da-mu a-na-pa-n-ga ma-mbo me-nga a-ta-ka-yo-fa-nya si-ku zi-ja-
2. Ju-ma-ta-tu ha-di ju-ma-mo-si a-na-ji-shu-ngu-li-sha na u-ta-fu-ta-
3. A-na-ji-shu-ngu-li-sha na fa-mi-li-a ya-ke ku-wa-le-a wa-to-to wa-
4. A-na-ji-te-n-ga na ma-ba-ya na dha-mbikwa-ni zi-na m-kwa-za Mu-ngu wa-
5. Ha-takwa ma-gu-mu ha-fi mo-yo a-na-m-li-li-a Mu-ngu mwe-nye u-we-



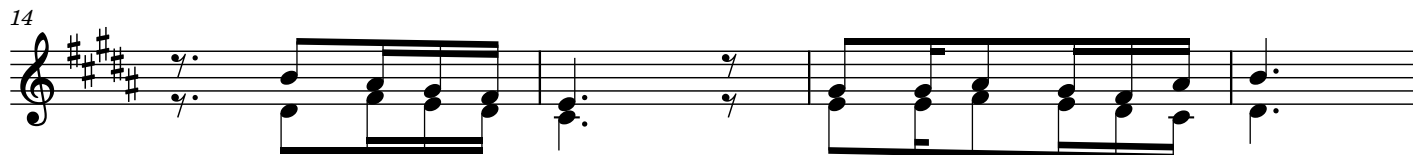
-zo a-na-wa-za vye-ma na te-na a-
-ji ki-sha si-ku ya-sa-ba a-na-a-
-ke wa-la-ha-ji-shu-ngu-li-shi-na ma-
-ke ka-ti-ka ma-mbo me-nga du-ni-a-
-zo a-na-ju-a ku-wa ha-ta-a-i-



-na-tu-mi-a u-zo-e-fu a-li-o-na-o
-m-ka-na ku-e-le-ke-a ma-dha-ba-hu-ni
-mbo ya-na-yo-shi-nda u-le u-we-zo wa-ke
-ni a-na-ta-ma-ni mo-ja tu-li-ti-mi-e
-bi-ka a-ki-mu-i-ta a-ta-m-si-ki-a



a-tu-ma-i-ni yo-te ya-ta-ti-mi-a
ku-m-shu-ku-ru ye-ye a-li-ye ju-u
ye' a-na-ju-a Mu-ngu am-pi-ga-ni-a
a-na-ta-ma-ni a-m-pe-nde-ze Mu-ngu
a-ta-m-ji-bu ku-m-fu-ta ma-cho-zi



a-na-a-mi-ni yu-po Mu-ngu mu-we-za
na ku-m-si-fu ye-ye Mu-ngu mu-we-za
ye' a-me-we-ka tu-ma-i-ni kwa Bwa-na
i-li mwi-sho-ni a-m-la-ki nyu-mba-ni
na-ku-m-ti-a ngu-vu na nee-ma za-ke

Ni Mu-ngumu-u-mba - ji wa mbi-ngu na du-ni - a a - li - ye-we-ka vi-
 Mu-ngu m-pa-nga - ji wa ma-mboya - i-shi - yo na ma-mboya mi-le-
 muu-mba-ji wa mbi - ngu na du-ni-a a - li - we-ka
 mpa-nga-ji wa ma - mbo ya - i-shi-yo na mi - le-le

-tu vyo - te pa - le vi - sta - hi - li - vyo
 -le tu - ma - i - ni la mwa - na - da - mu
 vi - tu vyo - te pa - le vi - sta - hi - li - vyo
 ma - mbo tu - ma - i - ni la mwa - na da - mu