

BWANA ALITUTENDEA

Wimbo wa Katikati Dom "30"

Erick E. Lupembe

13th Oct, 2024

CHEMBA

Moderato

Con brio

Bwa na a li tu tende a ma mbo ma ku— u tu li ku wa tu ki

fu ra hi

1. fu ra hi fu ra hi tu ki fu ra hi ra— hi

2. fu ra hi tu ki fu ra hi ra— hi

fu ra hi

Detailed description: This block contains the first system of the musical score. It features a grand staff with a treble and bass clef. The music is in 3/8 time and B-flat major. The lyrics are written below the notes. The first system includes the beginning of the piece and a first ending section with two endings.

Maishairi

1. Bwa na a li po wa re je za ma te ka wa Sa yu ni tu li ku wa ka ma wa o
ndi po ki nywa ki li po ja

ta o ndo to na u li mi we tu ke le le za fu ra ha
a ki che ko

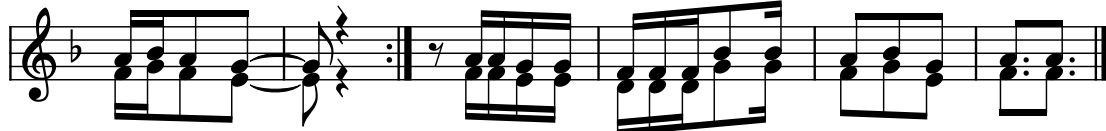
2. Ndi po ma ta i fa wa li po se— ma Bwa na a li tu te nde a ma mbo
Bwa na a me tu te nde a ma mbo

ma ku u tu li ku wa tu ki fu ra hi tu ki fu ra— hi
ma ku u

Detailed description: This block contains the second system of the musical score. It continues the grand staff notation from the first system. It includes two verses of lyrics. The first verse is marked with a '1.' and the second with a '2.'. The music features a mix of eighth and sixteenth notes, with some rests and repeat signs.



3. I nga wa m tu a e nda za ke a ki li a A zi chu ku a po mbe gu
a ta ru di kwa ke le le



za ku pa nda a i chu ku a po mi ga nda mi ga nda ya ke
za fu ra ha

"TUMUIMBIE MUNGU, KWA SAUTI ALIZOTUJALIA"

-ERICK E. LUPEMBE

erickaureus@gmail.com

+255 759 444 612

+255 613 127 750