

WEWE BWANA NGUVU YANGU

Zab 18:1-3, 46, 50 (K) 1

Beatus M. Idama

12.10.2022

Kinyerezi - DSM

Adagietto maestoso

S
A

We we Bwa na nguvu, zangu za ngu, nakupenda sa na.

T
B

Musical score for Soprano (S) and Alto (A) parts, measures 1-4. The score is in 4/4 time with a key signature of one flat (Bb). The lyrics are: "We we Bwa na nguvu, zangu za ngu, nakupenda sa na."

5

1. Wewe Bwana nguvu za ngu, na ku penda sa na; Bwa na ni ja ba li la ngu, na boma

Musical score for Soprano part, measures 5-7. The lyrics are: "1. Wewe Bwana nguvu za ngu, na ku penda sa na; Bwa na ni ja ba li la ngu, na boma"

8

la ngu na Mwokozi wa ngu, Mu ngu wangu, mwamba wangu ni na ye m ki mbili a.

Musical score for Soprano part, measures 8-10. The lyrics are: "la ngu na Mwokozi wa ngu, Mu ngu wangu, mwamba wangu ni na ye m ki mbili a."

11

2. Ngao ya ngu na pe mbe, ya wo ko vu wa ngu, Na ngo me ya ngu,

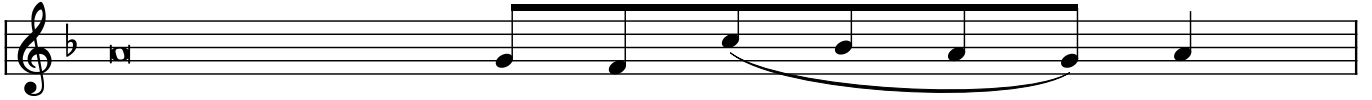
Musical score for Soprano part, measures 11-13. The lyrics are: "2. Ngao ya ngu na pe mbe, ya wo ko vu wa ngu, Na ngo me ya ngu,"

14

ni tamwita Bwana anayesta hi li ku si fi wa; hi vyo ni ta o ko ka na a dui za ngu.

Musical score for Soprano part, measures 14-16. The lyrics are: "ni tamwita Bwana anayesta hi li ku si fi wa; hi vyo ni ta o ko ka na a dui za ngu."

18



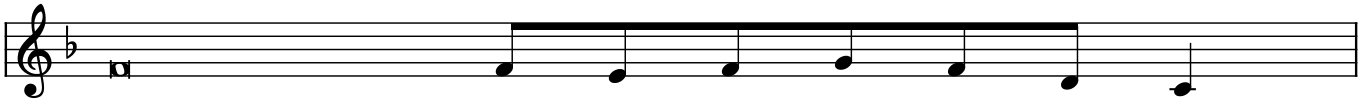
1. Wewe Bwana nguvu zangu, naku pe nda sa _____ na,
 2. Ngao yangu na pembe ya wo ko vu wa _____ ngu,
 3. Bwana ndiye a li ye ha _____ i,

19



Bwana ni ja ba li la _____ ngu,
 Na ngo _____ me ya _____ ngu,
 Na atukuzwe Mungu wa wo ko vu wa _____ ngu,

20



Na boma langu na Mwo ko zi wa _____ ngu,
 Nitamwita Bwana anayesta hi li ku si fi _____ wa,
 Ampa Mfalme wake wo ko vu m ku _____ u,

21



Mungu wangu mwamba wangu ni na ye m ki mbi li _____ a.
 Hivyo nitao ko ka na a du i za _____ ngu.
 Amfanyia fa dhi _____ li Ma si ha wa _____ ke.