

# TUNAKUNGOJA EWE MASIHA

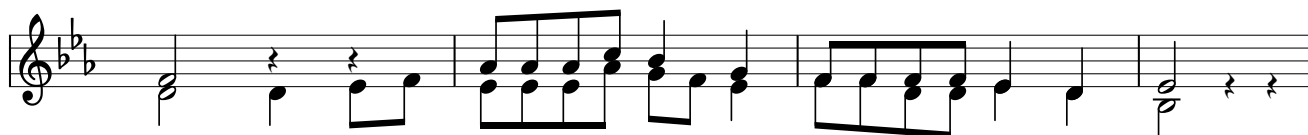
Rukeha pb@Kijichi.Dsm  
+254 754 567120  
(Hamonised by E.A.Minja)

Tu-na-kungoja e-we Ma-si-ha, u-jekwetu e-we Ma-si-ha Bwana  
Bwana a-li

ka-ri - bukwe-tu tu-na - ku-ngo - ja ma - si - ha, tu-na - ku-ngo - ja

1. Masi - ha njo - o. njo-o kwetu o njo-okwe-tu.  
2.

- |  |                        |                             |
|--|------------------------|-----------------------------|
| 1. Tu - me - ku - ngo - ja                       | si - ku nyi _____ ngi, | u - je ku - tu - o - ko -   |
| 2. Bwa-na tu - o - nye - she                     | re - he _____ ma,      | tu - pa - ti - e wo - ko -  |
| 3. Ni - me - ku - tu - ma - i - ni               | we _____ we,           | ni - si - je a - i - bi -   |
| 4. Wa - ku - ngo - ja - o                        | we - we Bwa _____ na,  | ha - wa - ta - a - i - bi - |
| 5. Ta - za - me - ni wa - na - Sa - yu _____ ni, |                        | mwo - ko - zi a - na - ku - |



1. a (ee Bwana) ka-ri-bu Masi\_\_\_ ha u-je ku-tu-ko-mbo - a.
2. vu (ee Bwana) ka-ri-bu Masi\_\_\_ ha u-je ku-tu-ko-mbo - a.
3. ka (ee Bwana) ka-ri-bu Masi\_\_\_ ha u-je ku-tu-ko-mbo - a.
4. ka (ee Bwana) ka-ri-bu Masi\_\_\_ ha u-je ku-tu-ko-mbo - a.
5. ja (ee Bwana) ka-ri-bu Masi\_\_\_ ha u-je ku-tu-ko-mbo - a.