

BWANA AMEJAA HURUMA

Zab 103: 1 - 3, 9 - 12 (K) 8

$\text{♩} = 55$

S
A

hu ru ma

Bwa na a me ja a hu ru ma na ne e ma, si mwe pe si wa ha

T
B

hu ru ma

si mwe pe si

hu ru ma

6

ni mwi ngi

si ra ni mwi ngi wa fa dhi .li

9

1. Ee na fsi ya - ngu u m hi mi di Bwa na, na
a m vyo - te vi li vyo nda ni ya ngu, vi li hi mi - di ji na la ko

2.

17

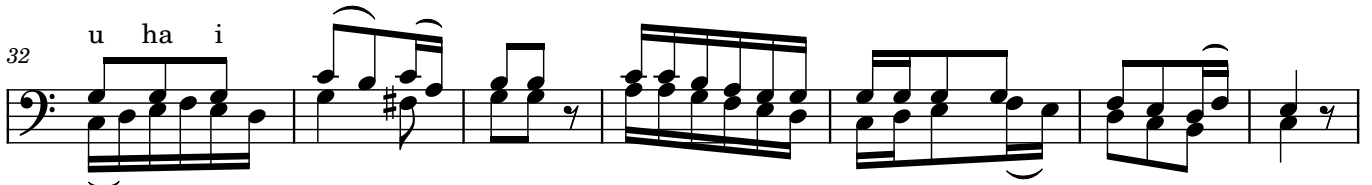
Ta ka ti fu, Ee na fsi ya ngu u m hi mi di Bwa na wa la u si zi sa

24

ha u fa dhi li za ke zo te.



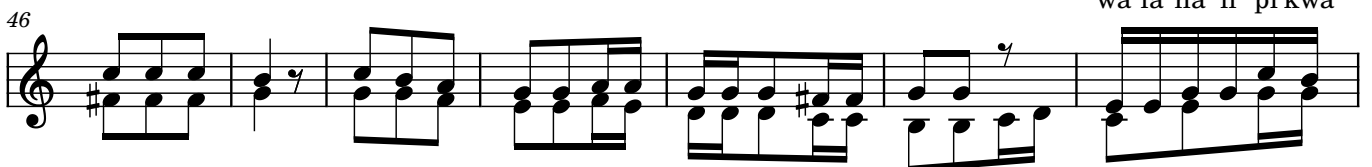
2.Ndi ye a na ye ku sa me he ma o vu ya ko yo te, a u ko - mbo a
A ku po nya a ku po nya ma go njwa - ya ko yo te



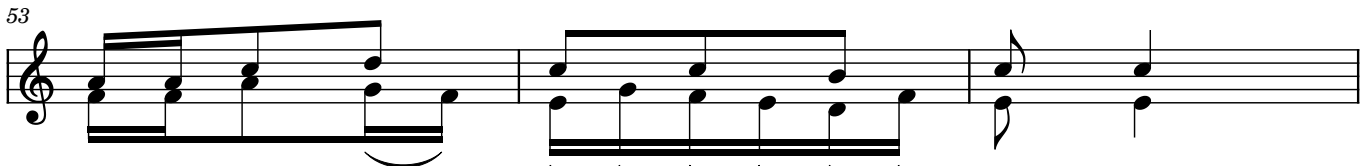
u ha i
u - ha i wa ko na - ka - bu ri a ku ti a ta ji ya fa dhi li na re he - ma



3.Ye ye ha ta - te ta ha ta te ta si ku zo te wa la ha ta shi ka ha si ra ya



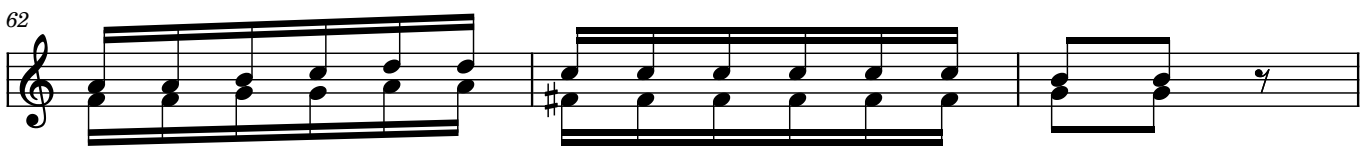
ke mi le le, ha tu te nde i ka di ri ya ha ti a ze tu wa la ha li pi kwa



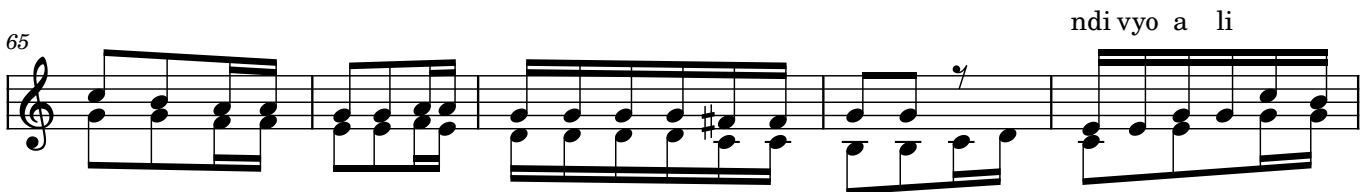
ka di ri ya ma o vu ye tu.



4.Ma a na vi le mbi ngu zi li vyo i nu ka ju u ya nchi, ka di ri i le i



le re he ma za ke ni ku u kwa wa m cha o,



ka ma masha ri ki i li vyo mba li na ma gha ri bi ndi vyo a li vyo we

70

ka dha mbi ze tu mba li na si

The image shows a musical score for a vocal line. It begins with a treble clef and a key signature of one flat. The melody starts on a G4 note, moves to A4, then B4, and ends on C5. The lyrics 'ka dha mbi ze tu mba li na si' are written below the notes. The notes are: ka (G4), dha (A4), mbi (B4), ze (C5), tu (G4), mba (A4), li (B4), na (C5), si (G4). There are slurs under 'ze tu', 'mba li', and 'na si'. The score ends with a double bar line.