

PANGONI KAZALIWA.

Na Oswald L Gerelo.
Mpiji - Magohe DSM
Nov. 2021.

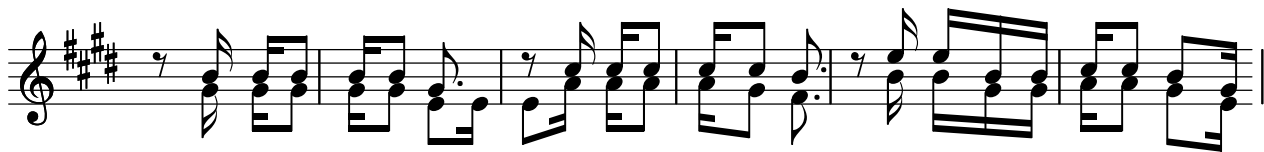
Kwafuraha.

Musical notation for the first system, featuring a treble and bass clef with a key signature of three sharps (F#, C#, G#) and a 6/16 time signature. The melody is written in the treble clef, and the bass line is in the bass clef. The lyrics are: Ka za li wa mto to Ye su ka za li wa twe nde tu ka mwo ne ka za li wa mto

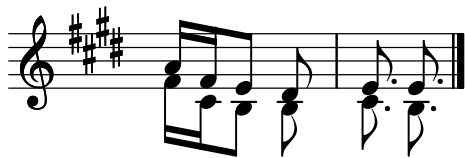
Musical notation for the second system, continuing the melody and bass line. The lyrics are: -to Ye su ka za li wa pa ngo ni be t le he mu ka za li wapa ngo ni be t le

Musical notation for the third system, continuing the melody and bass line. The lyrics are: ka za li wa he mu pa ngo ni be tle he ka a li wa pa ngo ni be tle he - mu ka za li wa

Musical notation for the fourth system, including first and second endings. The lyrics are: twe nde ni na za wa di tu ka msa li mu pa ka msa li mu



1.Mto to ka za li wa (le o) kwa a ji li ye tu twe nde ni tu m la ki mwo
2.Tu me ko mbo le wa (si si) to ka u tu mwa ni a ma ni du ni a ni u
3.Tu che ze tu i mbe (le o) tu m sha ngi li e kri sto mwa na wa Mu ngu a



ko zi wa du ni a.
tu ku fu mbi ngu ni.
li ye za liwa le o.