

MATAIFA YOTE  
ZAB. 72 EPHIFANIA

Essau A. Lupembe  
Mandewa Singida  
Kwaya Familia Tk.  
0768-052-092

♩ = 65 Mata i fa yo te ya u li mwe ngu

S  
A  
Ma ta i fa yo te ma ta i fa yo te ya u li mwe - ngu

T  
B  
mwe ngu ya u li

6  
ya ta ku su ju di a Ee - Bwa na ya ta ku su ju di a

S  
A  
mwengu Bwa na Ee - Bwana ya ta ku su ju di a

T  
B  
Bwa na Ee - Bwana ya ta ku su ju di a

12  
Ee - Bwa na Bwa na F - R E - E O R G A N

S  
A  
Ee - Bwa na Bwa na

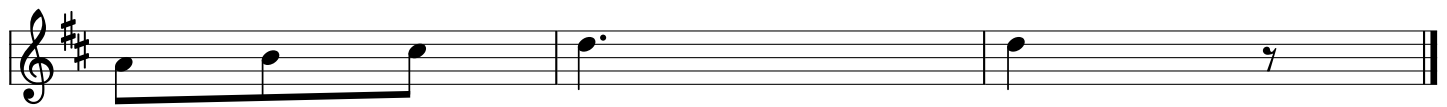
T  
B  
Ee - Bwa na Bwa na

21  
1)Ee Mu ngu m pe m fa lme hu kumu za ko na mwana wa m fa lme

S  
A  
1)Ee Mu ngu m pe m fa lme hu kumu za ko na mwana wa m fa lme

T  
B  
1)Ee Mu ngu m pe m fa lme hu kumu za ko na mwana wa m fa lme

29



ha - ki ya ko

32



2)A ta wahu ku mu wa tu - wa kwa hu - ha ki na wa tu wa ko wa

39



li o o ne wa kwa - hu ku mu

43



3)Si ku za ke ye ye m tu mwenye ha ki a ta si ta wi

50



na wi ngi wa a ma ni ha ta mwe zi u ta ka po ko ma

56



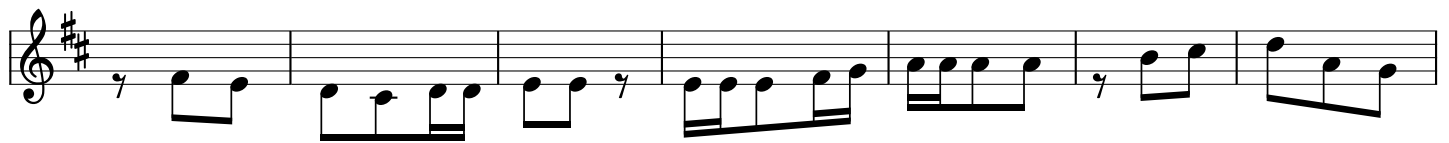
4)Na a we na e nzi to ka ba - ha ri ha ta ba ha ri to ka m to

65



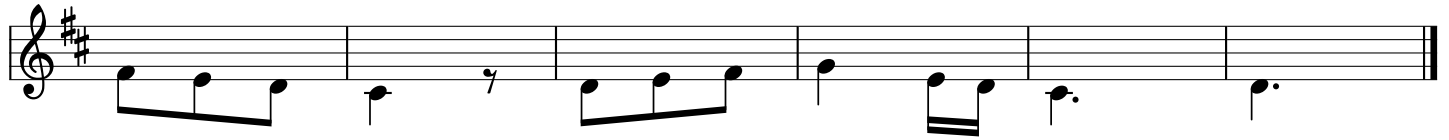
ha ta mi i sho - ya du ni a

69



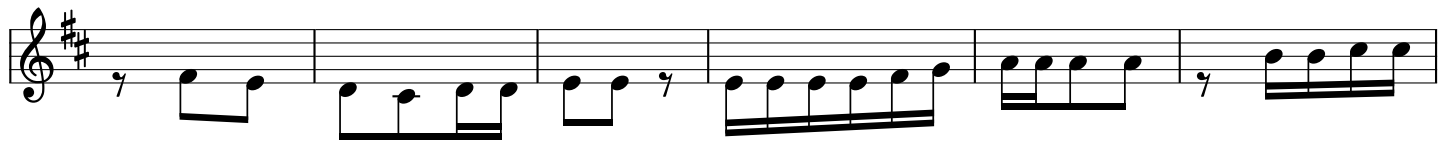
5)Wa fa lme wa Ta r shi shi na vi si wawa le te ko di wa fa lme wa She

76



ba na Se ba wa to e vi - pa wa

82



6)Naa m wa fa lme - wo te a li ye dha i fu ma s ki ni wo te wa m

88



su ju di e ma ta ia fa yo te ya to - m tu mi - ki e

95



7)Ma a na a ta m kombo a m hi ta a li a po na m tu a li ye o ne wa

102



i wa po ha na m sa i di - zi

106



8)Aa ta m hu ru mi a a lo dha i fu na ma - ski ni na na fsi za wa hi ta ji

a ta zi o - ko - a

The image shows a single line of musical notation in bass clef with a key signature of two sharps (F# and C#). The melody consists of the following notes: a quarter note G2, a quarter note A2, a quarter note B2, a quarter note C3, a quarter note D3, a quarter note E3, a quarter note F3, a quarter note G3, a quarter note A3, a quarter note B3, a quarter note C4, a quarter note D4, a quarter note E4, a quarter note F4, a quarter note G4, a quarter note A4, a quarter note B4, a quarter note C5, a quarter note D5, a quarter note E5, a quarter note F5, a quarter note G5, a quarter note A5, a quarter note B5, a quarter note C6, a quarter note D6, a quarter note E6, a quarter note F6, a quarter note G6, a quarter note A6, a quarter note B6, a quarter note C7, a quarter note D7, a quarter note E7, a quarter note F7, a quarter note G7, a quarter note A7, a quarter note B7, a quarter note C8, a quarter note D8, a quarter note E8, a quarter note F8, a quarter note G8, a quarter note A8, a quarter note B8, a quarter note C9. The lyrics 'a ta zi o - ko - a' are written below the notes, with hyphens indicating that the notes are sustained across the bar lines.