

# Heri Kila mtu amchaye Bwana

Wimbo wa katikati Sikukuu ya Familia Takatifu

Na, Emmanuel Boniphace  
St. Peter Parish Swaswa  
Dodoma 2024 Dec  
0787863339 - 0745581579

He ri ki la m tu a m cha ye Bwa na  
a m cha ye  
m tu

The first system of the hymn is written in treble and bass clefs. The key signature has three sharps (F#, C#, G#) and the time signature is 3/4. The melody is in the treble clef, and the accompaniment is in the bass clef. The lyrics are: "He ri ki la m tu a m cha ye Bwa na" on the first line, "a m cha ye" on the second line, and "m tu" on the third line.

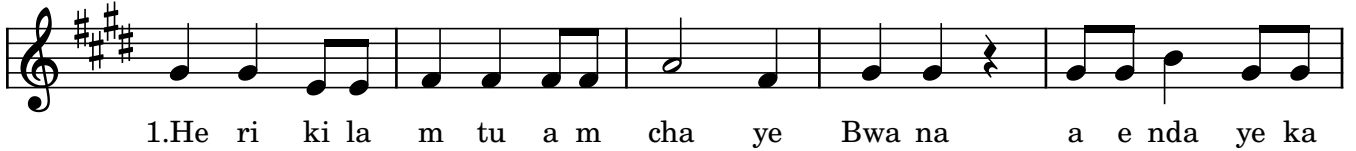
5  
a e nda ye ka ti ka nji a ya ke  
ya ke nji a ya ke

The second system of the hymn is written in treble and bass clefs. The key signature has three sharps (F#, C#, G#) and the time signature is 3/4. The melody is in the treble clef, and the accompaniment is in the bass clef. The lyrics are: "a e nda ye ka ti ka nji a ya ke" on the first line and "ya ke nji a ya ke" on the second line.

9  
a e nda e ka ti ka nji a ya ke  
a e nda ye ka ti ka nji a ya ke

The third system of the hymn is written in treble and bass clefs. The key signature has three sharps (F#, C#, G#) and the time signature is 3/4. The melody is in the treble clef, and the accompaniment is in the bass clef. The lyrics are: "a e nda e ka ti ka nji a ya ke" on the first line and "a e nda ye ka ti ka nji a ya ke" on the second line.

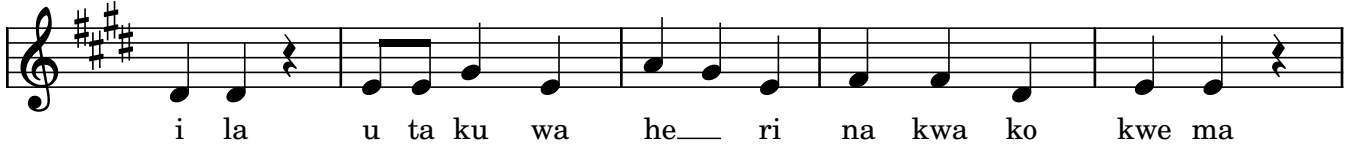
13



18



24



29



35



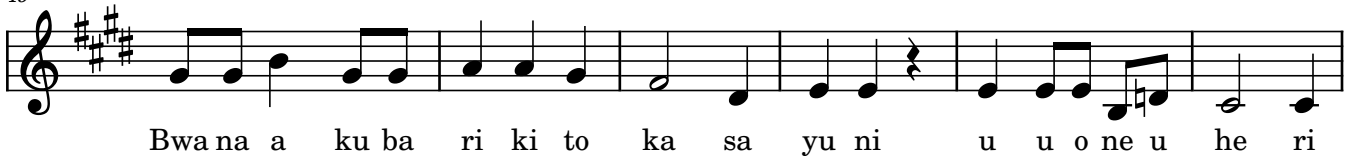
41



45



49



55

